

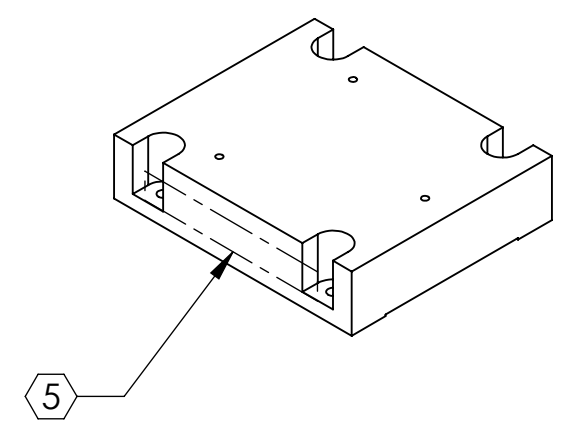
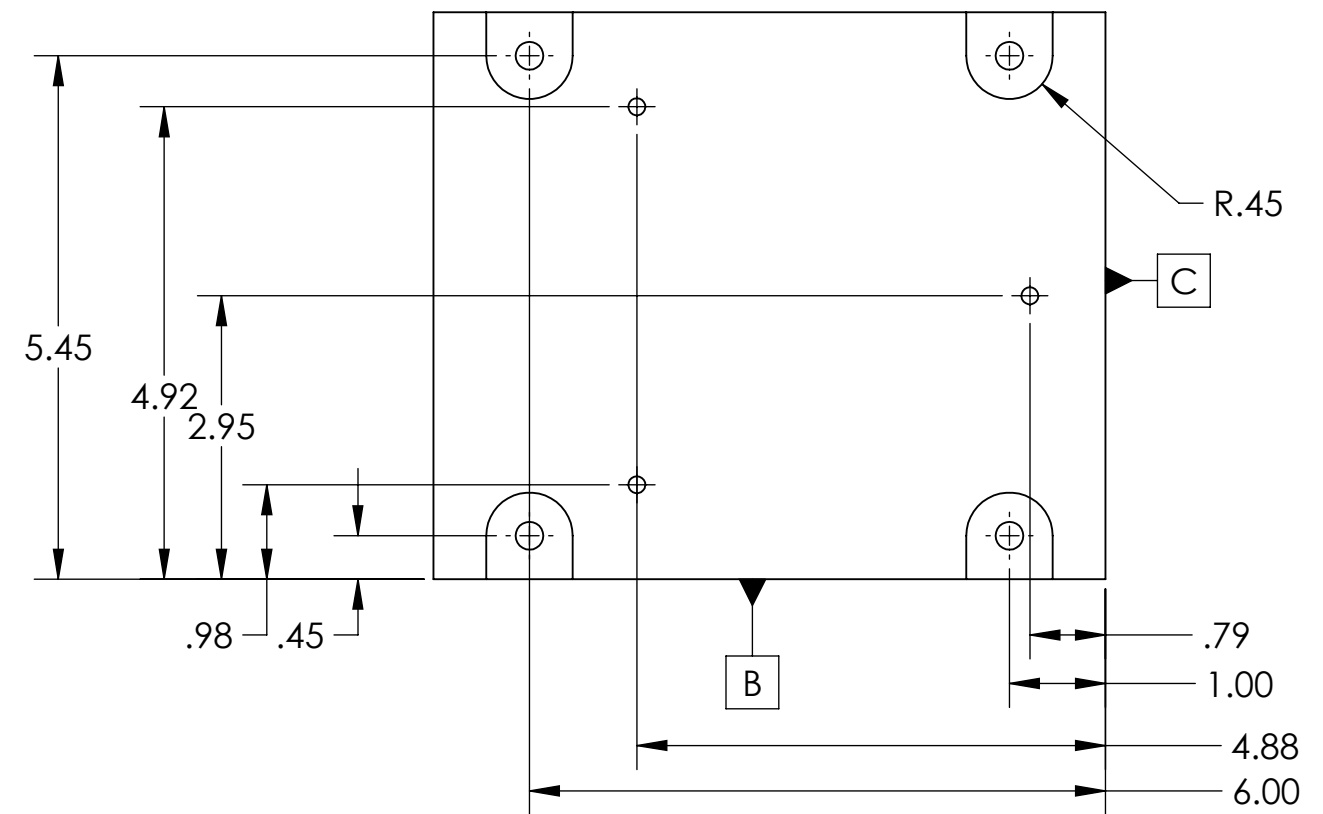
8 7 6 5 4 3 2 1

NOTES CONTINUED:
 5. SCRIBE, ENGRAVE (A VIBRATORY TOOL MAY BE USED), LASER MARK OR MECHANICALLY STAMP (NO INKS OR DYES) DRAWING PART NUMBER, REVISION (AND VARIANT OR "TYPE" IF APPLICABLE) ON NOTED SURFACE OF PART FOLLOWED ON THE NEXT LINE WITH A THREE DIGIT SERIAL NUMBER. SERIAL NUMBERS START AT 001 FOR THE FIRST ARTICLE AND PROCEED CONSECUTIVELY. USE MINIMUM 0.12" HIGH CHARACTERS, UNLESS THE SIZE OF THE PART DICTATES SMALLER CHARACTERS. EXAMPLE: DXXXXXX-VY, TYPE-XX, S/N XXX

REV.	DATE	DCN #	DRAWING TREE #
V3	1 JUL 2013	E1300516	-
-	-	-	-
-	-	-	-

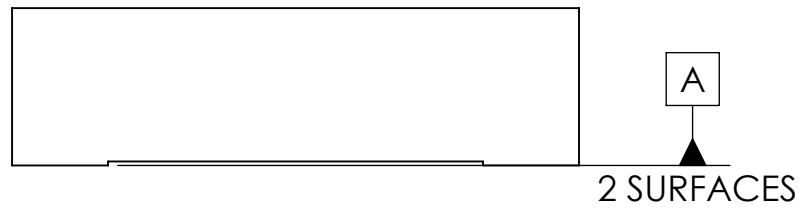
- D 6. APPROXIMATE WEIGHT = X.XXX LB.
 7. MACHINE ALL SURFACES TO REMOVE OXIDES AND MILL FINISH. REFER TO LIGO-E0900364

(NON FABRICATION NOTE)
 The InnoLight Prometheus laser has a beam height of ~60 mm from the flat base (not the 4 little extrusions) to the centre of the beam shutters.

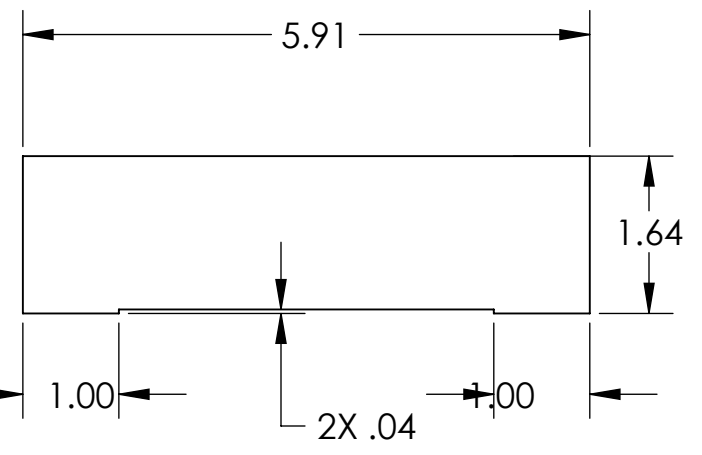
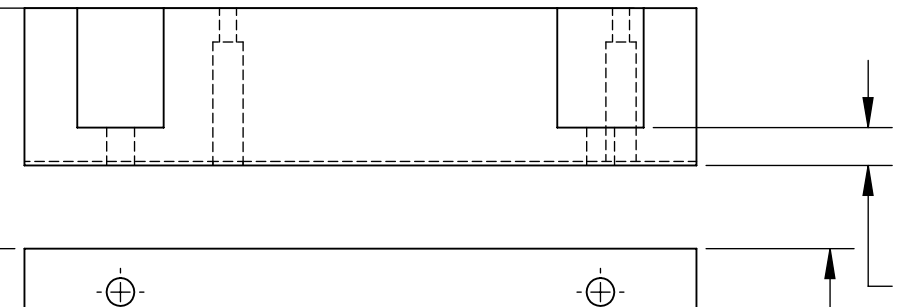


C

C

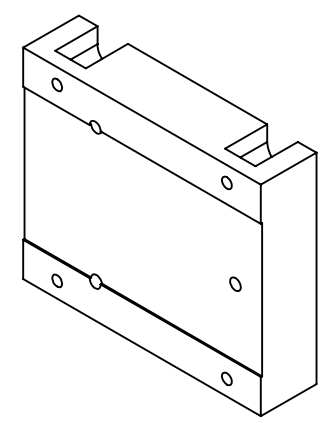


$\sqrt{\sqrt{.005}}$ A
 2 SURFACES



B

B



4X ϕ .29 THRU
 ϕ .014 (M) A B C

3X ϕ .18 THRU ALL
 \square ϕ .31 ∇ 1.28
 ϕ .012 (M) A B C

A

A

DIMENSIONS ARE IN INCHES [MM]		NOTES AND TOLERANCES: (UNLESS OTHERWISE SPECIFIED)		CALIFORNIA INSTITUTE OF TECHNOLOGY MASSACHUSETTS INSTITUTE OF TECHNOLOGY		PART NAME	
TOLERANCES: .XX \pm .01 .XXX \pm .005		1. INTERPRET DRAWING PER ASME Y14.5-1994. 2. REMOVE ALL SHARP EDGES, .005-.015, FOR MACHINED PARTS. ROUND ALL EDGES APPROXIMATELY R.02 FOR SHEET METAL PARTS. 3. DO NOT SCALE FROM DRAWING. 4. ALL MACHINING FLUIDS MUST BE FULLY SYNTHETIC, FULLY WATER SOLUBLE AND FREE OF SULFUR, SILICONE, AND CHLORINE.		LIGO		Base Mephisto Laser 1W	
ANGULAR \pm °		MATERIAL 6061-T6 Al		FINISH 125 μ inch		NEXT ASSY ISCT6	
				SYSTEM ADVANCED LIGO		SUB-SYSTEM ISC	
				DESIGNER BJJ Slagmolen		SIZE DWG. NO. B D1700138	
				DRAFTER B. Slagmolen 16 March 2017		REV. v1	
				CHECKER		SCALE: 1:2	
				APPROVAL		PROJECTION: SHEET 1 OF 1	

8 7 6 5 4 3 2 1

D1700xxx_Base_Coherent_Mephisto1W-imperial, PART PDM REV: X-000, DRAWING PDM REV: X-000