


Title			LIGO Laboratory California Institute of Technology Massachusetts Institute of Technology				
Squeezer Fiber Connections							
Size: B	DCC Number: D1700384	Revision: V8	Engineer: R. Abbott	Date: 6/7/2019			
C:\Users\daniel.sigg\Documents\Desktop\squeezer\SqueezerWire_v8\ISC\Squeezer\Squeezer Wiring\SqueezerWire_V8\SqueezerFiber_v8.SchDoc				Time: 8:48:22 AM		Sheet 2 of 11	

A

B

C

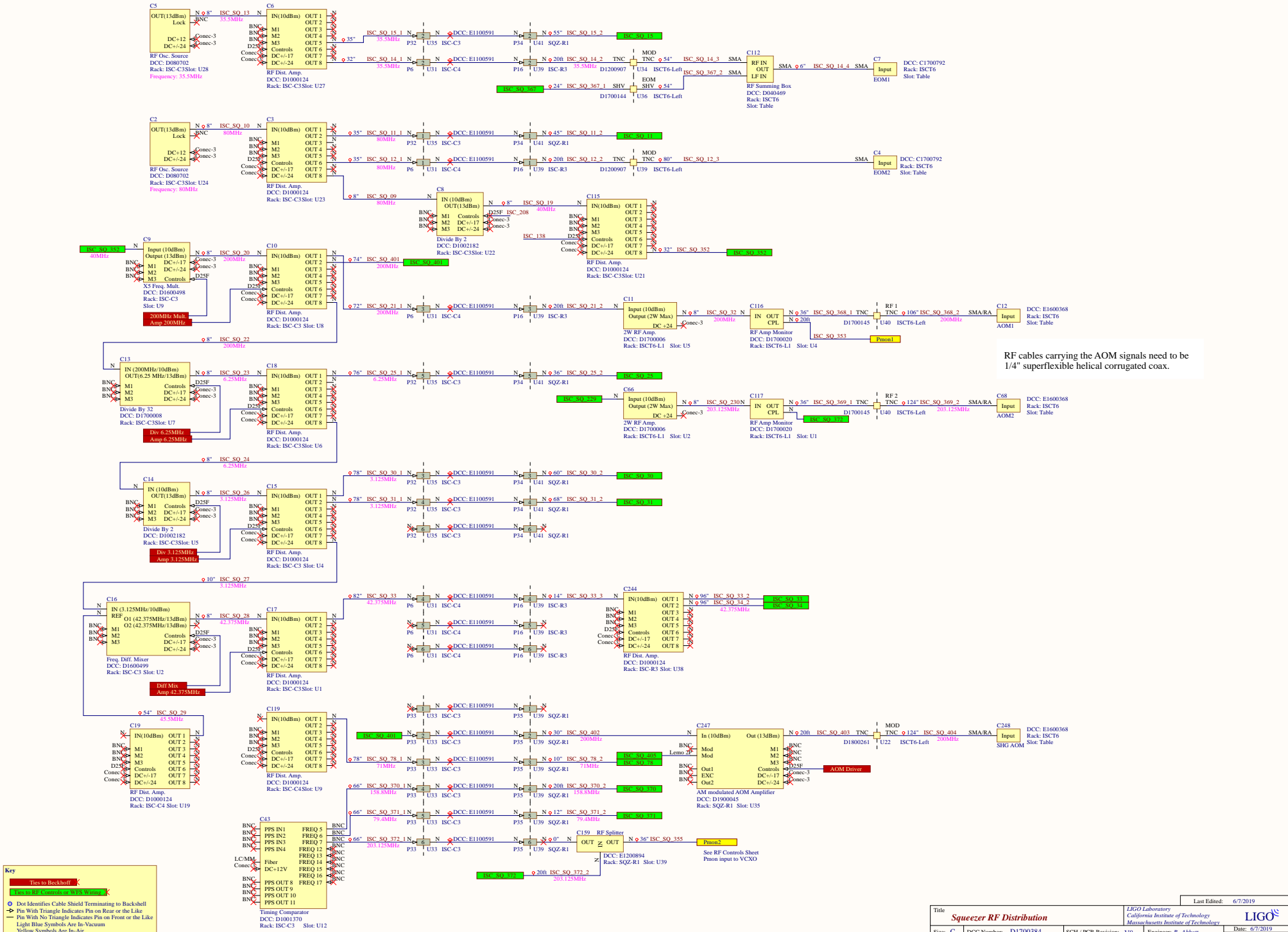
D

A

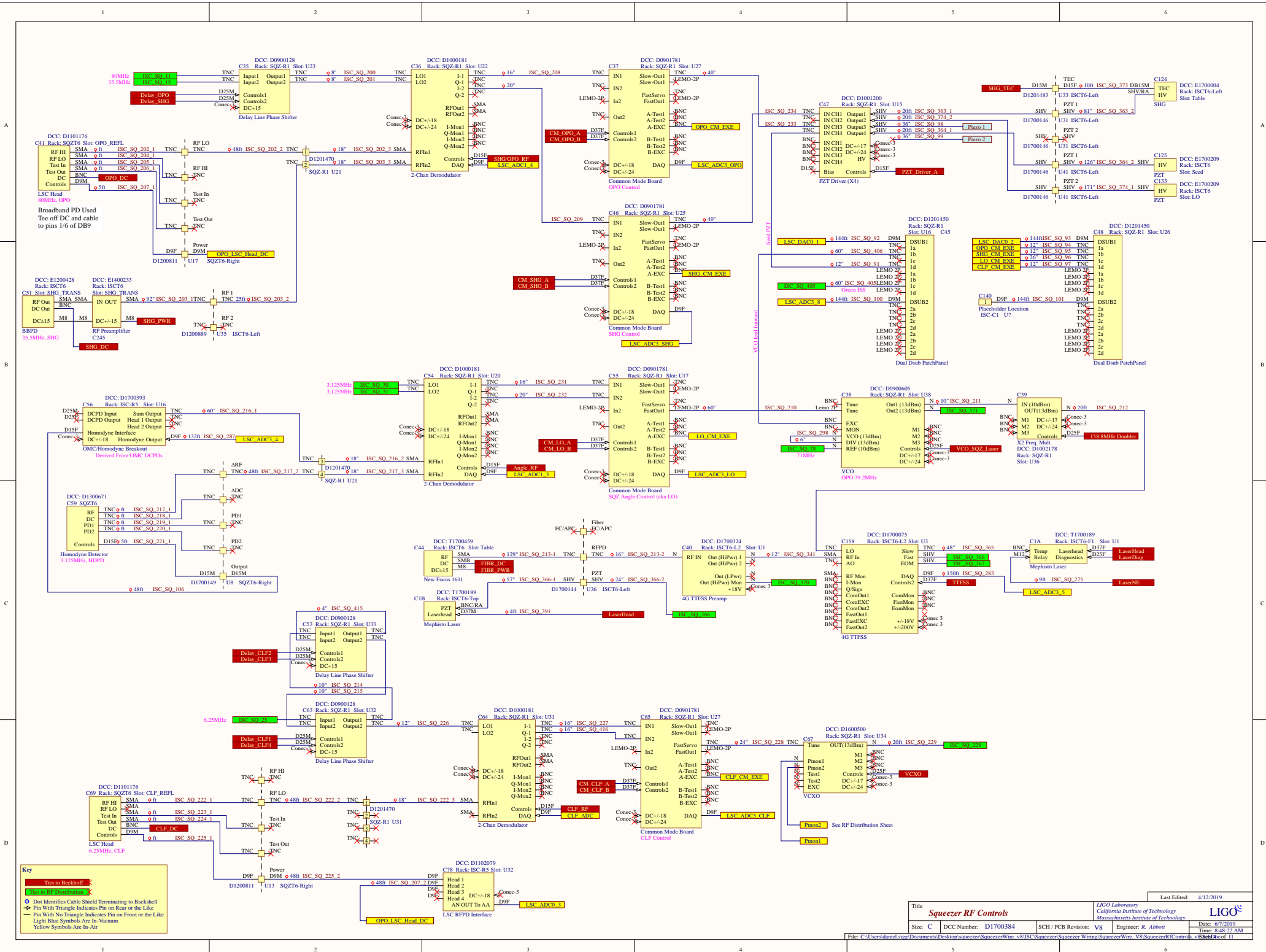
B

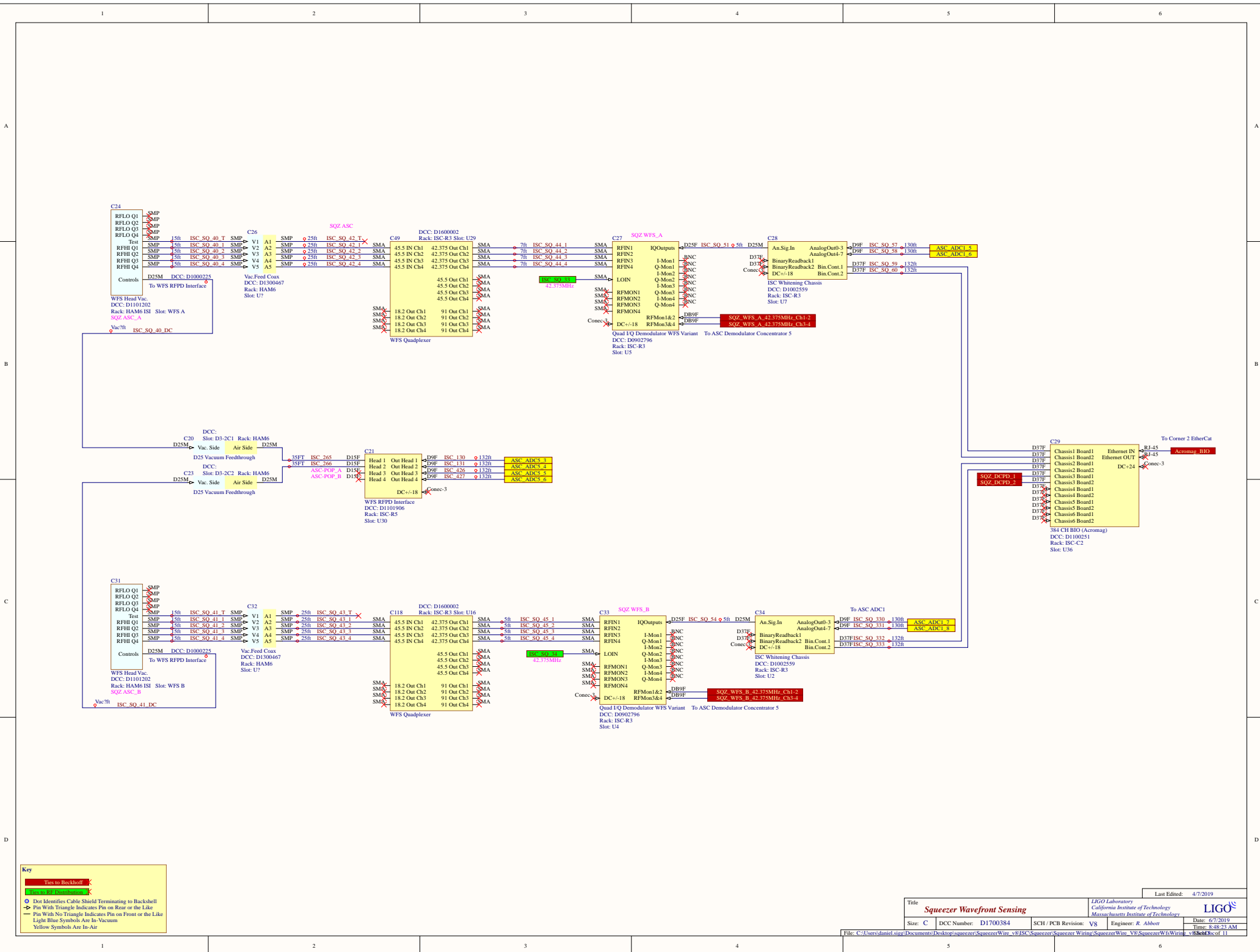
C

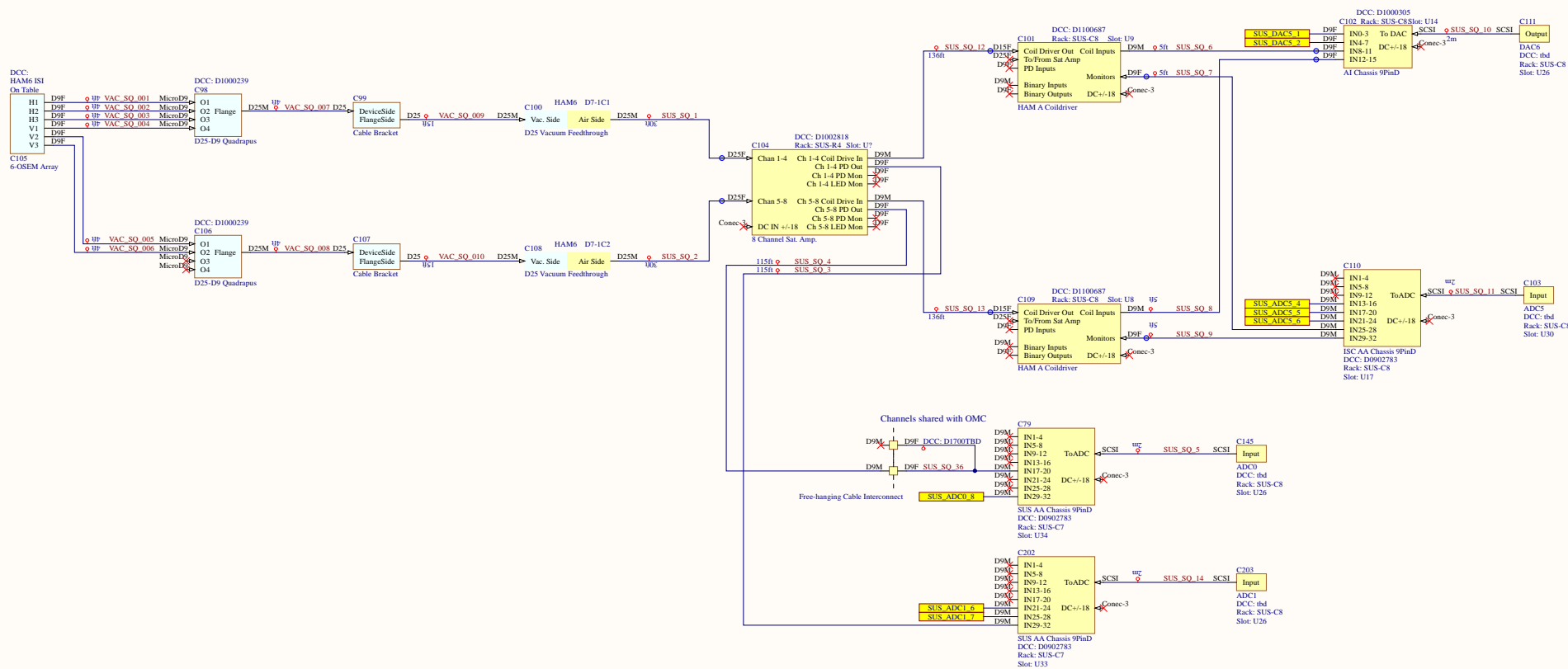
D



RF cables carrying the AOM signals need to be 1/4" superflexible helical corrugated coax.



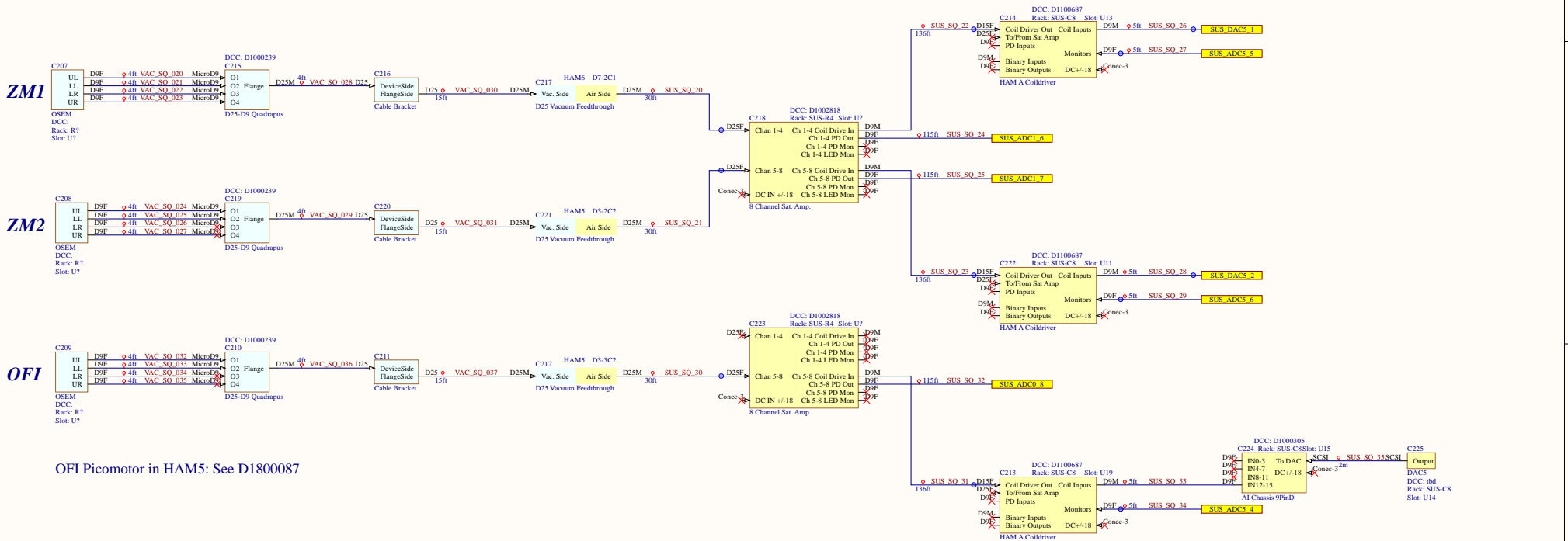




**Key**

- Dot Identifies Cable Shield Terminating to Backshell
- Pin With Triangle Indicates Pin on Rear or the Like
- Pin With No Triangle Indicates Pin on Front or the Like
- Light Blue Symbols Are In-Vacuum
- Yellow Symbols Are In-Air

### ZM/OFI Suspension Chains

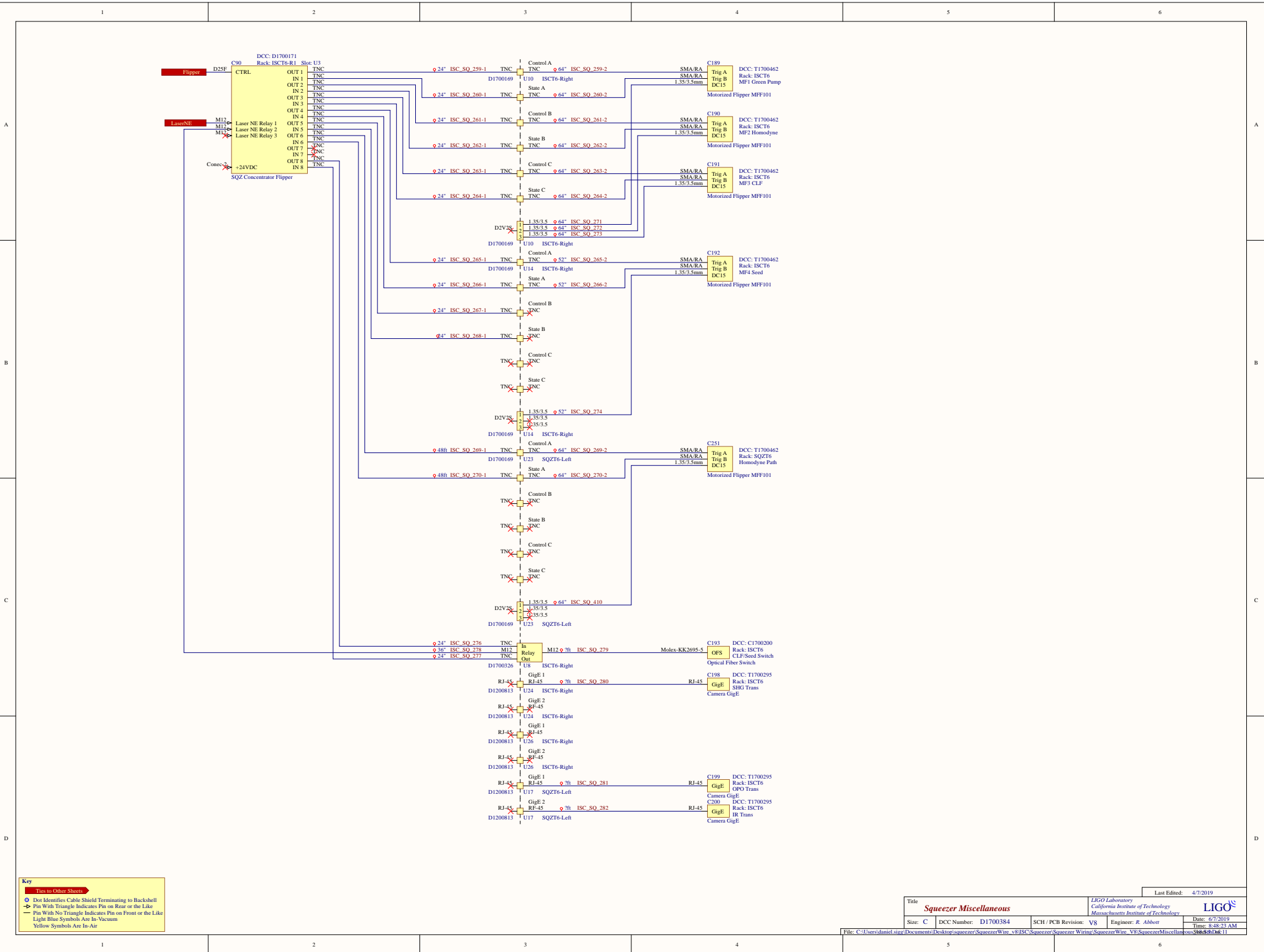


OFI Picomotor in HAM5: See D1800087

**Key**

- Dot Identifies Cable Shield Terminating to Backshell
- Pin With Triangle Indicates Pin on Rear or the Like
- Pin With No Triangle Indicates Pin on Front or the Like
- Light Blue Symbols Are In-Vacuum
- Yellow Symbols Are In-Air

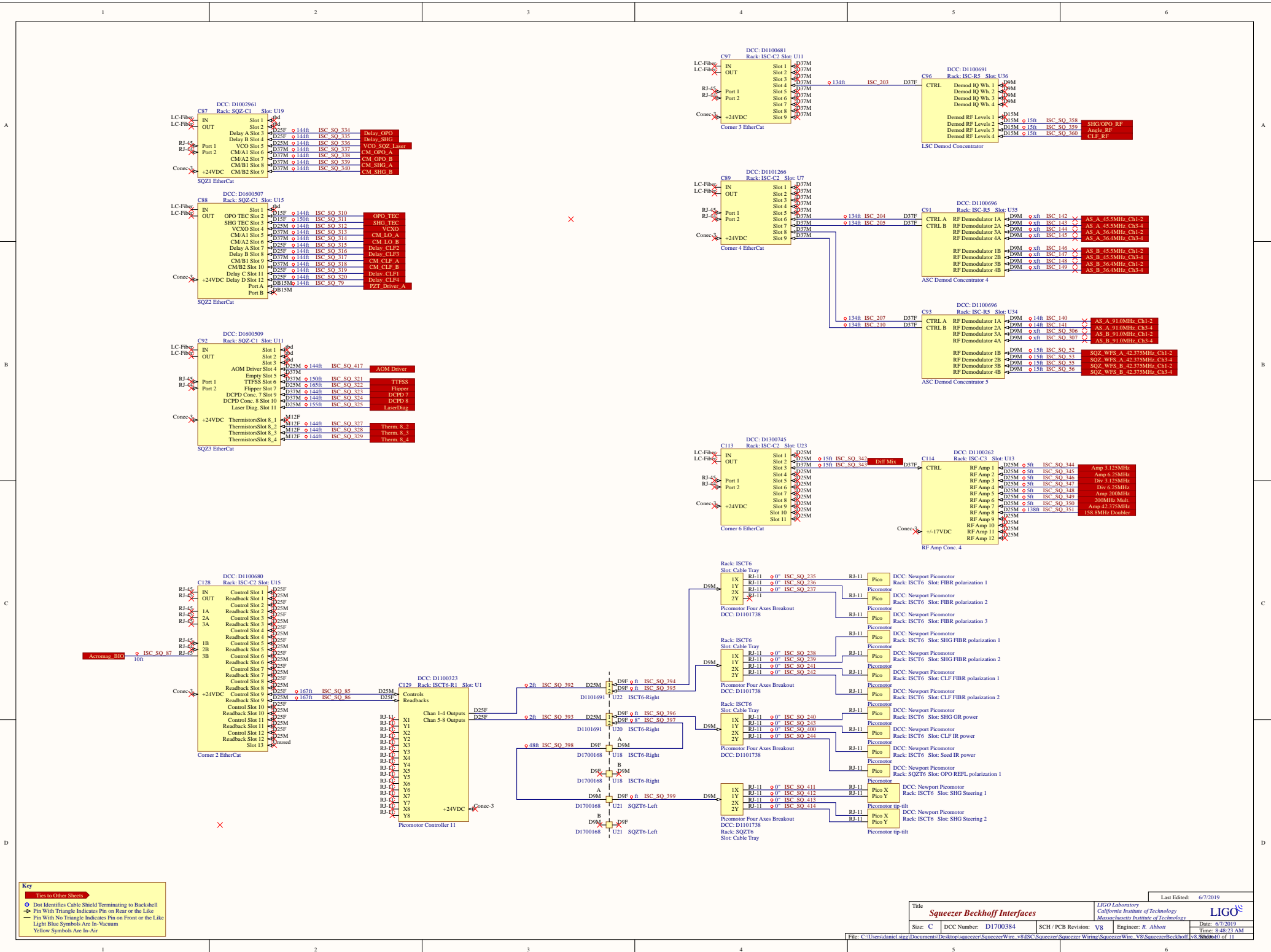




**Key**

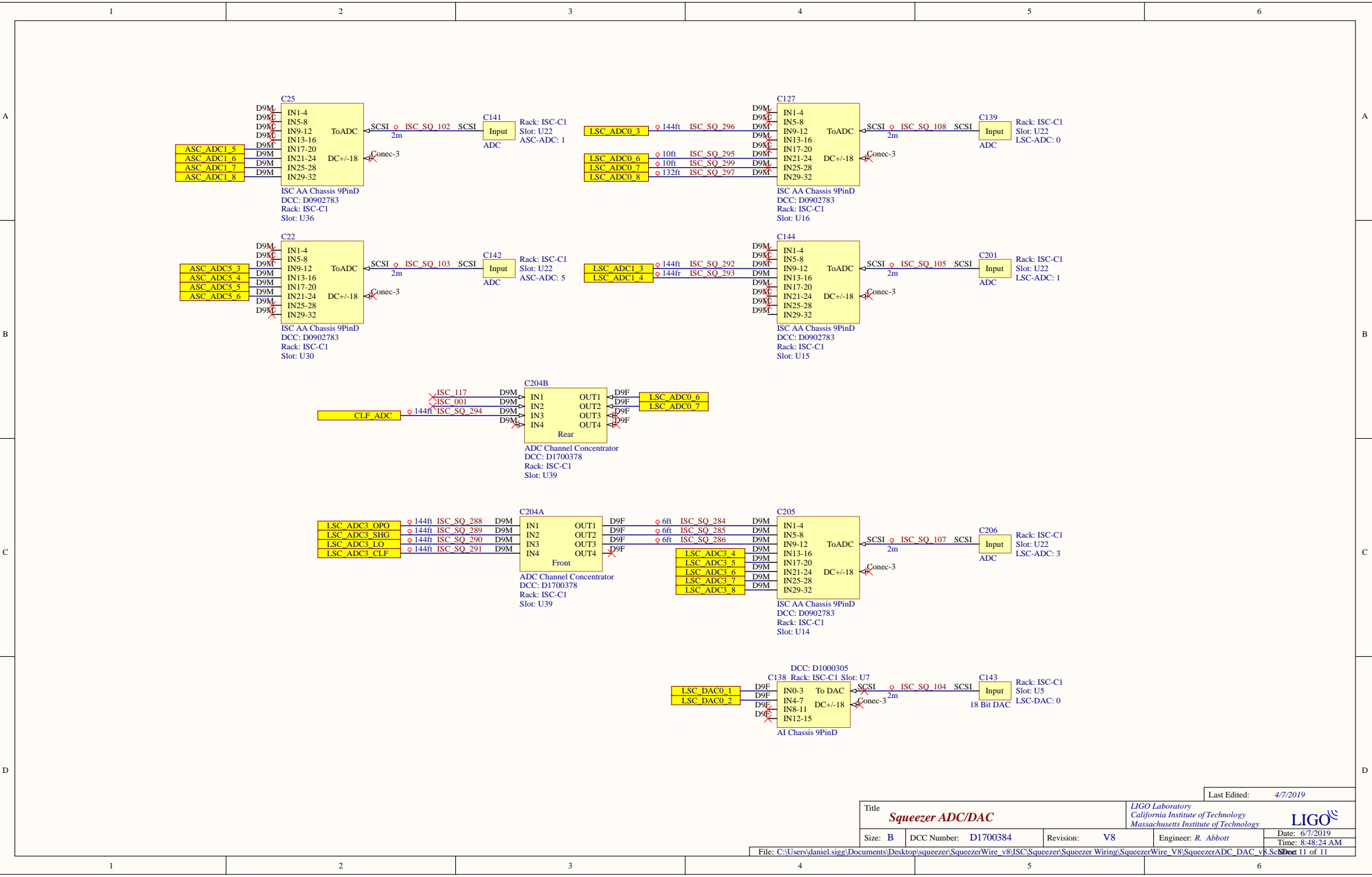
- Termin to Other Sheets
- Do Not Identify Cable Shield Terminating to Backshell
- Pin With Triangle Indicates Pin on Front or the Like
- Pin With No Triangle Indicates Pin on Rear or the Like
- Light Blue Symbols Are In Vacuum
- Yellow Symbols Are In Air

Title <b>Squeezzer Miscellaneous</b>		LIGO Laboratory California Institute of Technology Massachusetts Institute of Technology		Last Edited: 4/7/2019	
Size: C	DCC Number: D1700384	SCH / PCB Revision: V8	Engineer: R. Abbott	Date: 6/7/2019	
Time: 8:45:21 AM				File: C:\Users\daniel.siga\Documents\desktop\squeezzer\SqueezzerWiring\SqueezzerWiring\SqueezzerMiscellaneous\SqueezzerMiscellaneous.Dwg	



**Key**

- Open to Other Sheets
- Dot Indicates Cable Shield Terminating to Backshell
- Pin With Triangle Indicates Pin on Rear or the Like
- Pin With No Triangle Indicates Pin on Front or the Like
- Light Blue Symbols Are In Vacuum
- Yellow Symbols Are In Air



Title <b>Squeezer ADC/DAC</b>			Last Edited: 4/7/2019	
Size: B			DCC Number: D1700384	
Revision: V8			Engineer: R. Abbott	
Date: 6/7/2019			Time: 8:48:24 AM	

