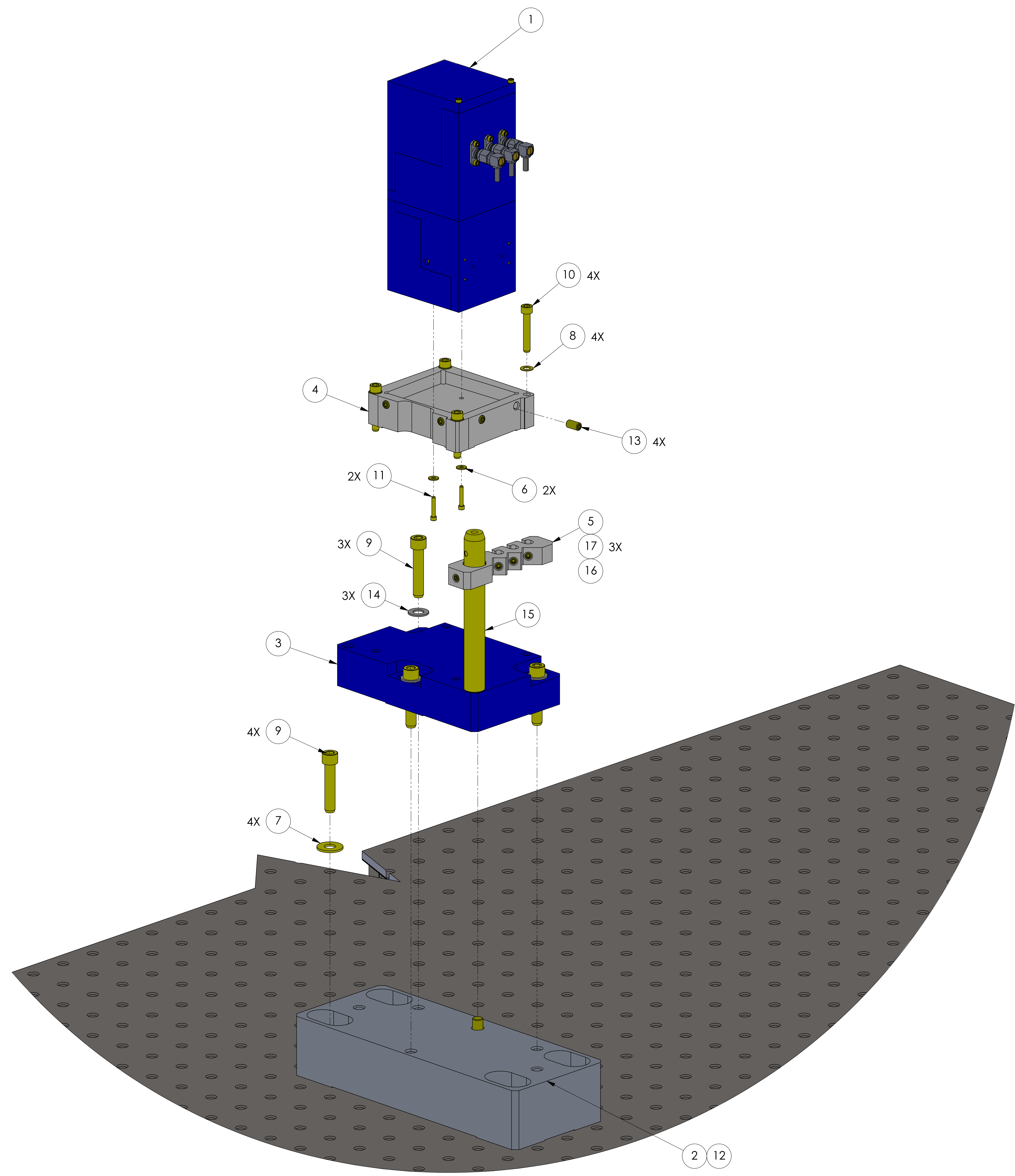


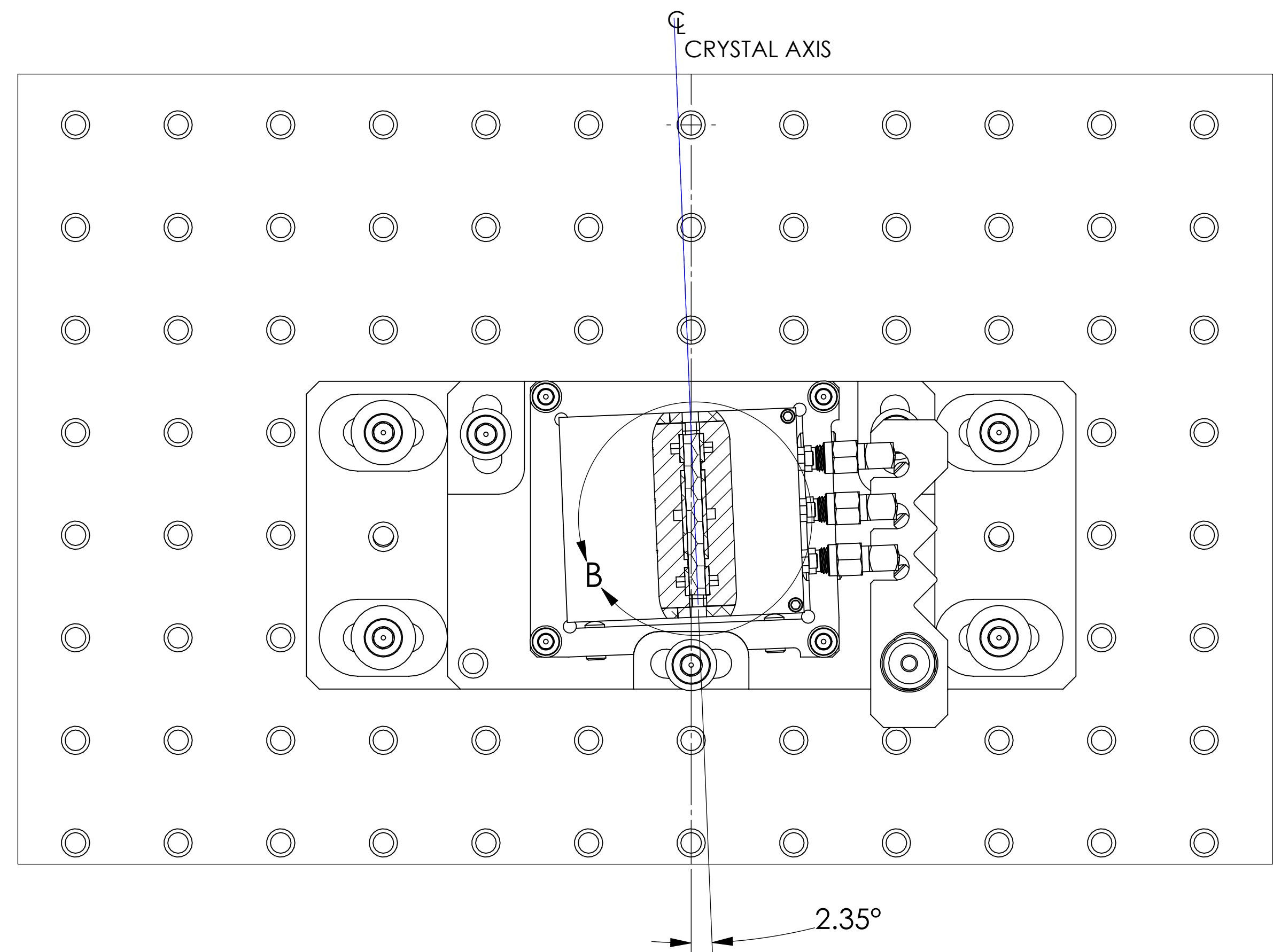
REV.	DATE	DCN #	DRAWING TREE #
v4	10 JUL 2018	E1800208-x0	-



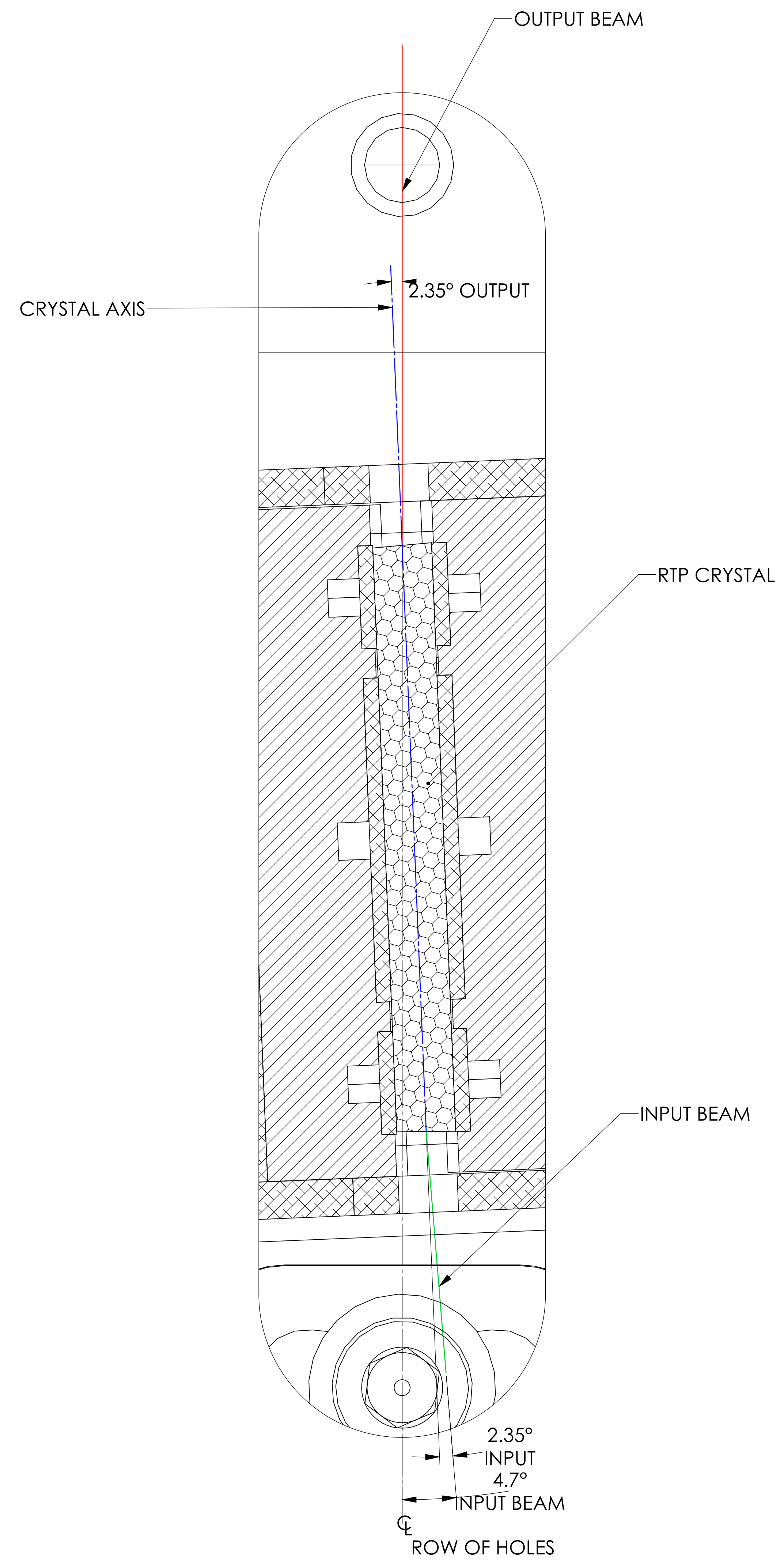
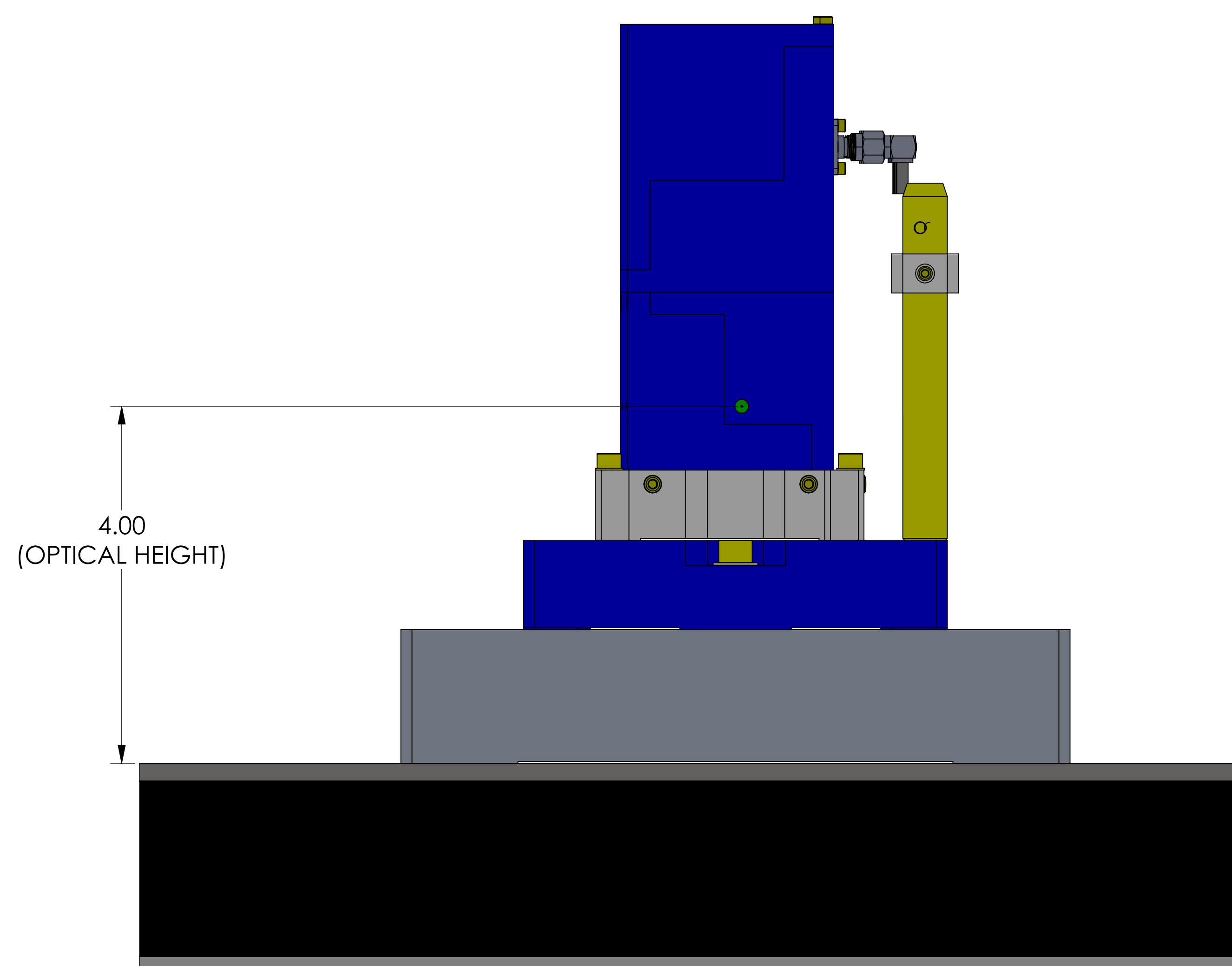
ISO VIEW

ITEM NO.	PART NUMBER	DESCRIPTION	MATERIAL	QTY.
17	92778A114 McMASTER-CARR OR EQ.	OVAL POINT SET SCREW, 10-32 X .38 LG.	18-8 SSSL	3
16	94355A192 McMASTER-CARR OR EQ.	SET SCREW, 8-32 X .38 LG.	18-8 SSSL	1
15	TR4 (Thorlabs)	OPTICAL POST, 1/2" DIA., 4"L, 8-32 STUD, 1/4-20 HOLE	300 SSSL	1
14	95630A470 McMASTER-CARR OR EQ.	WASHER, FLAT, 1/4"	PTFE (general)	3
13	92778A120 McMASTER-CARR OR EQ.	OVAL POINT SET SCREW, 10-32 X .50 LG.	18-8 SSSL	4
12	90145A540 McMASTER-CARR OR EQ.	DOWEL PIN, 1/4 DIA.	18-8 SSSL	1
11	92200A081 McMASTER-CARR OR EQ.	SCREW, SHC, #2-56 x .50	300 SSSL	2
10	MS16995-30 OR EQ.	SCREW, SHC, 8-32 X 1.0 LG.	300 SSSL	4
9	MS16995-53	SCREW, SHC, 1/4-20 X 1.25 LG.		7
8	NASC620-C8 OR EQ.	WASHER, FLAT, NO. 8	300 SSSL	4
7	MS15795-810 OR EQ.	WASHER, FLAT, 1/4"	300 SSSL	4
6	MS15795-802	WASHER, FLAT, NO. 2	18-8 SSSL	2
5	D1800192	IO, EOM, Strain Relief	PEEK	1
4	D1800191	IO, EOM, Insulator Block	PEEK	1
3	D1800190	IO, EOM, Rotatable Block	6061-T6 Al	1
2	D1800189	IO, EOM, MT. Base	6061-T6 (SS)	1
1	D1100392	αLIGO, IO, EOM ASSEMBLY	N/A	1

DIMENSIONS ARE IN INCHES		NOTES AND TOLERANCES: (UNLESS OTHERWISE SPECIFIED)		CALIFORNIA INSTITUTE OF TECHNOLOGY MASSACHUSETTS INSTITUTE OF TECHNOLOGY		PART NAME		IO, EOM ASSY. LAYOUT	
MATERIAL		FINISH		NEXT ASSY		SYSTEM: ADVANCED LIGO SUB-SYSTEM: IOO		DESIGNER: ESANCHEZ DRAFTER: ESANCHEZ CHECKER: SEE DCC APPROVAL: SEE DCC	
N/A		N/A μinch		N/A		DESIGNER: ESANCHEZ DRAFTER: ESANCHEZ CHECKER: SEE DCC APPROVAL: SEE DCC		SIZE: E DWG. NO.: D1800172 SCALE: 1:2 PROJECTION:	
								REV. v4 SHEET 1 OF 2	



**EOM, NOMINAL POSITION**  
 (i.e: CRYSTAL AXIS ROTATED 2.35 ° WITH RESPECT TO ROW OF HOLES)



**DETAIL 'B'**  
 SCALE 8 : 1