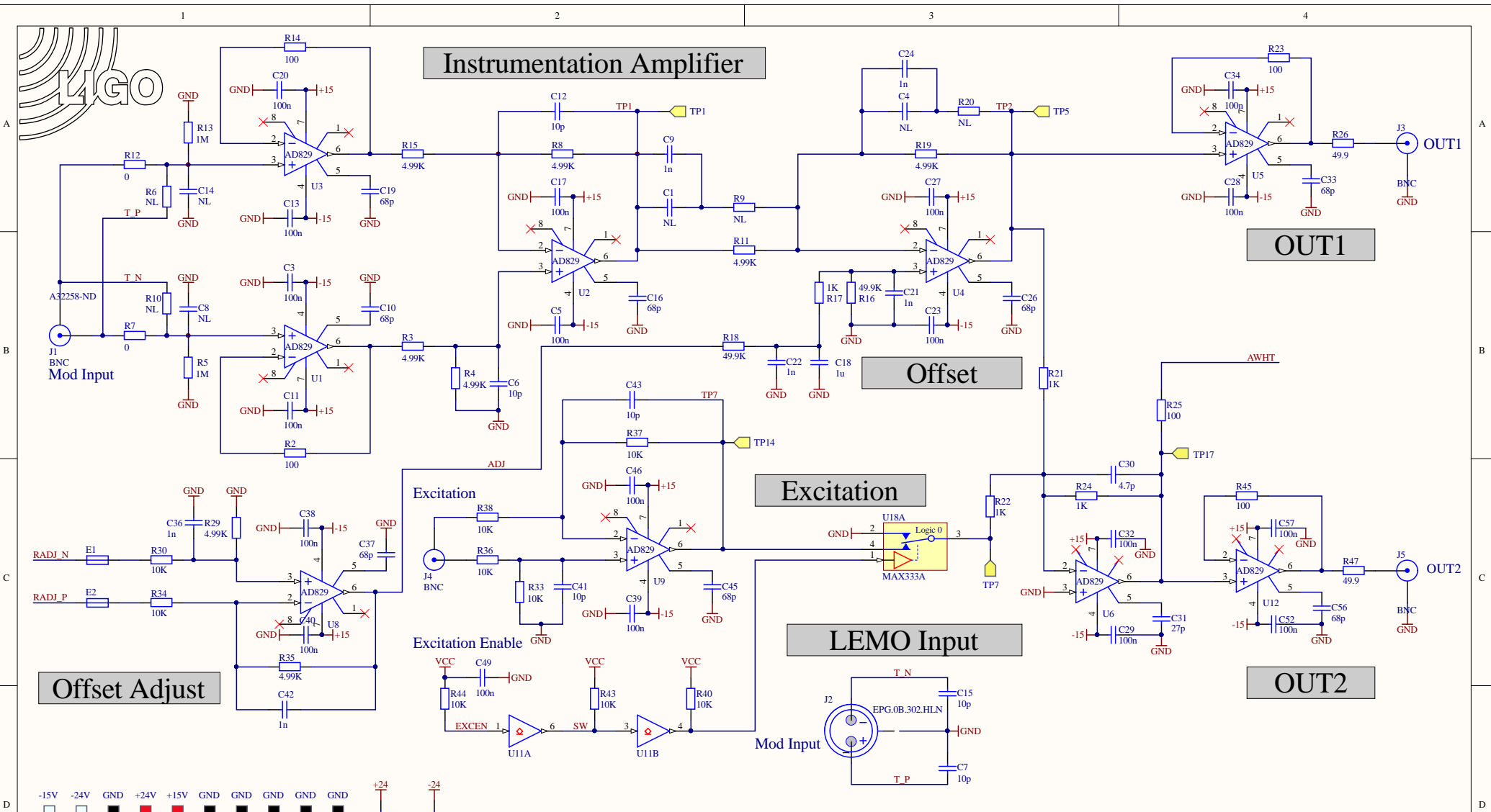


Instrumentation Amplifier



OUT1

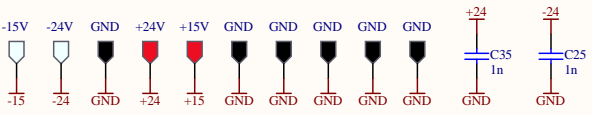
OUT2

Offset Adjust

Offset

Excitation

LEMO Input

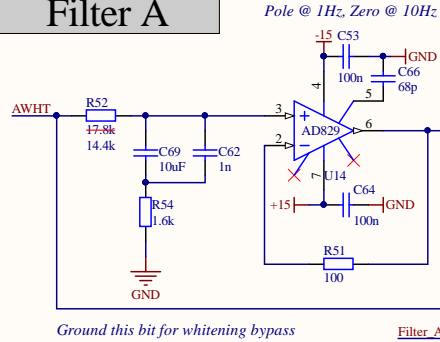


Title AM-AOM Power Conditioner			LIGO Laboratory California Institute of Technology Massachusetts Institute of Technology National Science Foundation	
Size: Legal	DCC:D1900049	REV: 1	Author: M. Pirello, D. Sigg	
Date: 3/15/2019 Time: 8:55:52 AM	Sheet 1 of 2			
File: C:\Users\marc.pirello\Altium\Solutions\SQZ - AOM-AM PSC\AM-AOM-1.SchDoc				

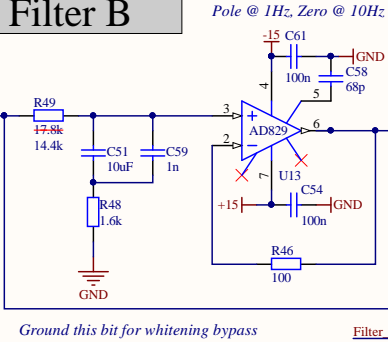




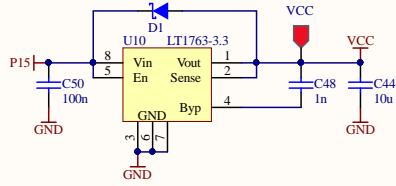
Filter A



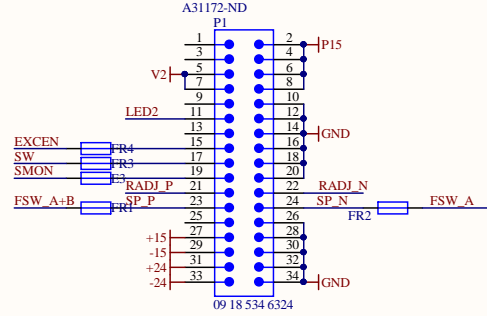
Filter B



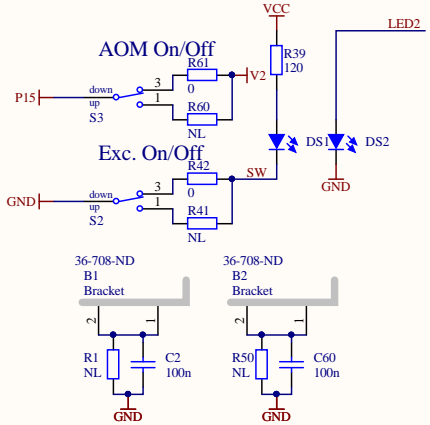
Logic Power



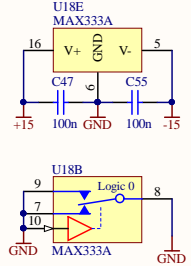
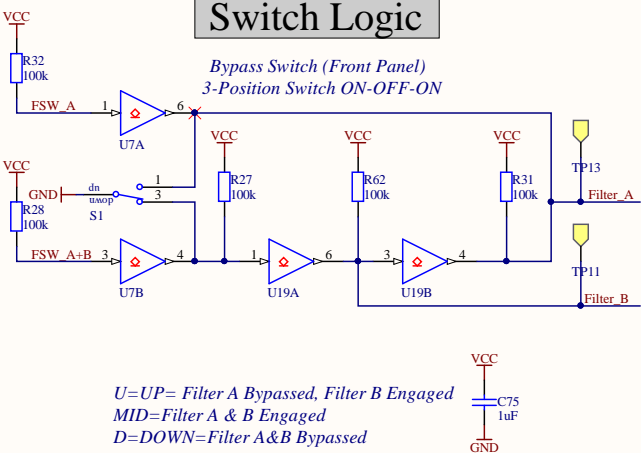
To RF Interface



Excitation/AOM Switch



Switch Logic



- | | |
|-------------------|-------------------|
| H1 #4 screw, 3/8" | H2 #4 screw, 3/8" |
| H3 #4 screw, 3/8" | H4 #4 screw, 3/8" |
| H5 #4 lock washer | H6 #4 lock washer |
| H7 #4 lock washer | H8 #4 lock washer |
| H9 #4 nut | H10 #4 nut |
| H11 #4 nut | H12 #4 nut |

Title AM-AOM Power Conditioner			LIGO Laboratory California Institute of Technology Massachusetts Institute of Technology National Science Foundation	
Size: Legal	DCC:D1900049	REV:1		
Date: 3/15/2019 Time:8:55:53 AM	Sheet 2 of 2		Author: M. Pirello, D. Sigg	
File: C:\Users\marc.pirello\Altium\Solutions\SQZ - AOM-AM PSC\AM-AOM-2.SchDoc				



AM-AOM Power Conditioner
D1900049
rev. 1 / serial [redacted]

