

5) **SCRIBE, ENGRAVE, LASER MARK OR MECHANICALLY STAMP (NO DYES OR INKS) A UNIQUE THREE DIGIT SERIAL NUMBER & REVISION NUMBER ON EACH PART. SERIAL NUMBERS START AT 001 FOR THE FIRST ARTICLE AND PROCEED CONSECUTIVELY. BAG AND TAG PARTS WITH THEIR DRAWING PART NUMBER, REVISION, VARIANT OR TYPE (IF APPLICABLE), AND QUANTITY. IF PARTS ARE TOO SMALL TO SCRIBE, BAGGING AND TAGGING ALONE IS SUFFICIENT.**
EXAMPLE (PART): 001-v-1
EXAMPLE (TAG): DXXXXXXX-VY, TYPE-XX, QTY: TBD

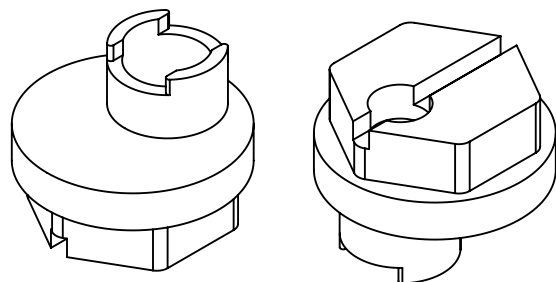
7. MACHINE ALL SURFACES TO REMOVE OXIDES AND MILL FINISH, USE OF ABRASIVE REMOVAL TECHNIQUES IS NOT ALLOWED.
REFER TO MANUFACTURING SPECIFICATION E2200225

8. ALL PARTS SHALL BE MANUFACTURED IN ACCORDANCE WITH
MANUFACTURING SPECIFICATION E2200225

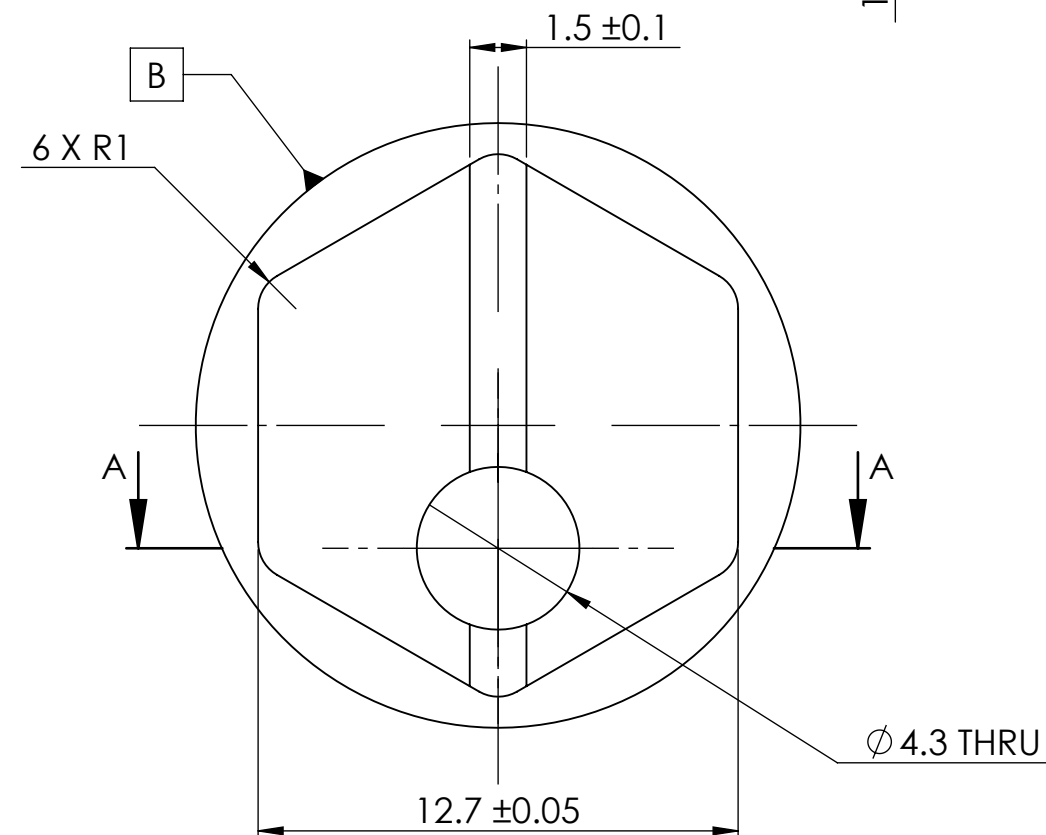
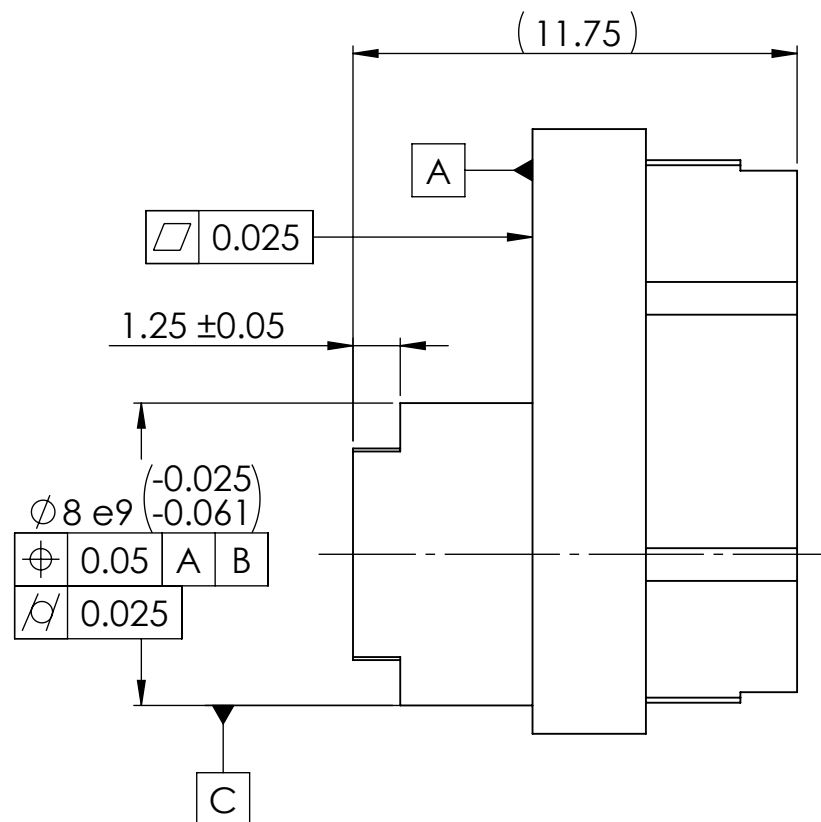
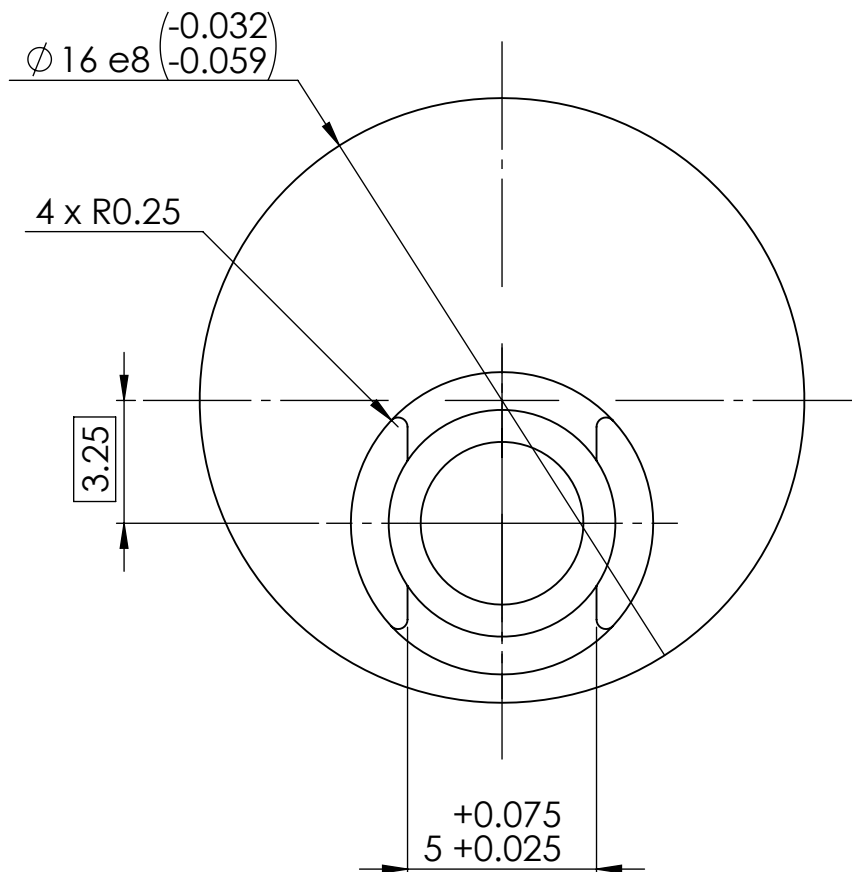
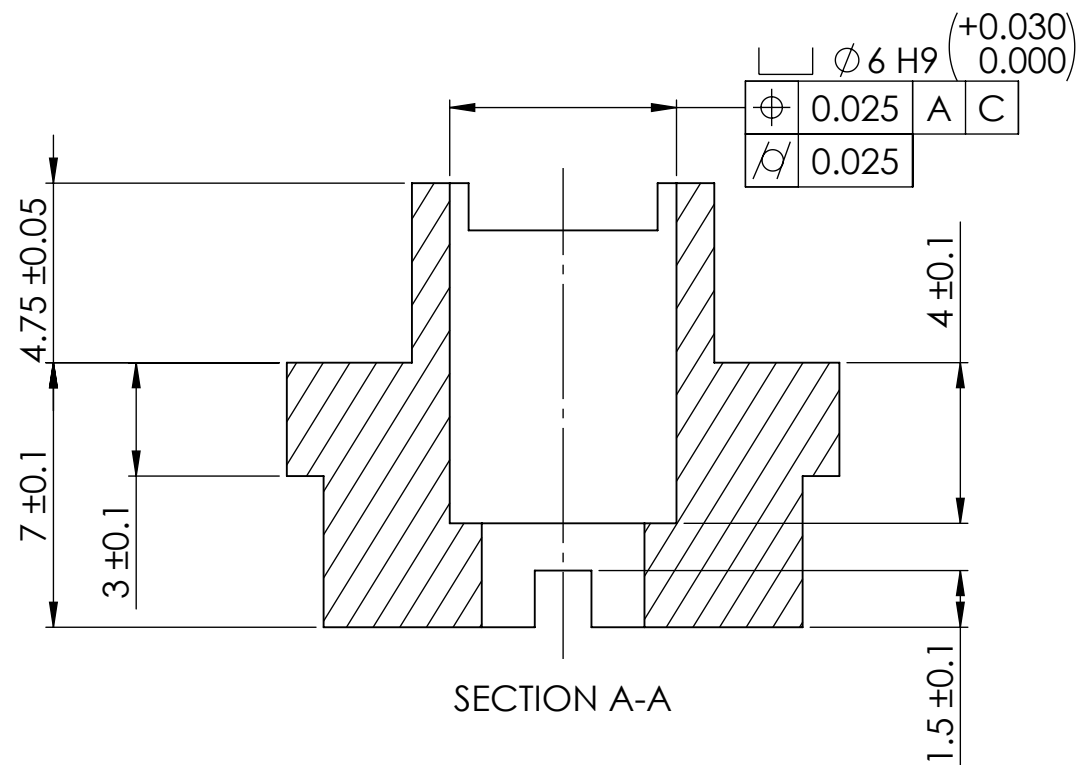
9. ALL MATERIAL IS TO BE VIRGIN MATERIAL (i.e. NO WELD REPAIRS, PLUGS OR RECYCLED MATERIAL). NO REPAIRS SHALL BE MADE UNLESS APPROVED IN ADVANCE, AND IN WRITING, BY LIGO LABORATORY. [REFER TO MANUFACTURING SPECIFICATION E2200225](#)

10. DUAL DIMENSIONED CALLOUTS IN THE FORMAT x.xxx" [x.x]
ARE TO BE MACHINED USING IMPERIAL TOOLING

11 MATERIAL: ALUMINUM BRONZE C95400 ASTM B505 CONTINUOUS CAST BAR STOCK,
NOMINAL COMPOSITION Cu-83, Al-10.8, Fe-4, Mg-0.5, Ni-Co-1.



ISO MODEL VIEW
SCALE 2:1

ANGULAR $\pm 0.2^\circ$

MATERIAL	Aluminium Bronze 
-----------------	--

FINISH
1.6 μm



CHECKER
APPROVAL

SCALE:	5:1	PROJECTION:		S
--------	-----	-------------	---	---

1 OF 1

SCALE: 5:1 PROJECTION:  SHEET 1 OF 1