

ETM14 absorber locations and images

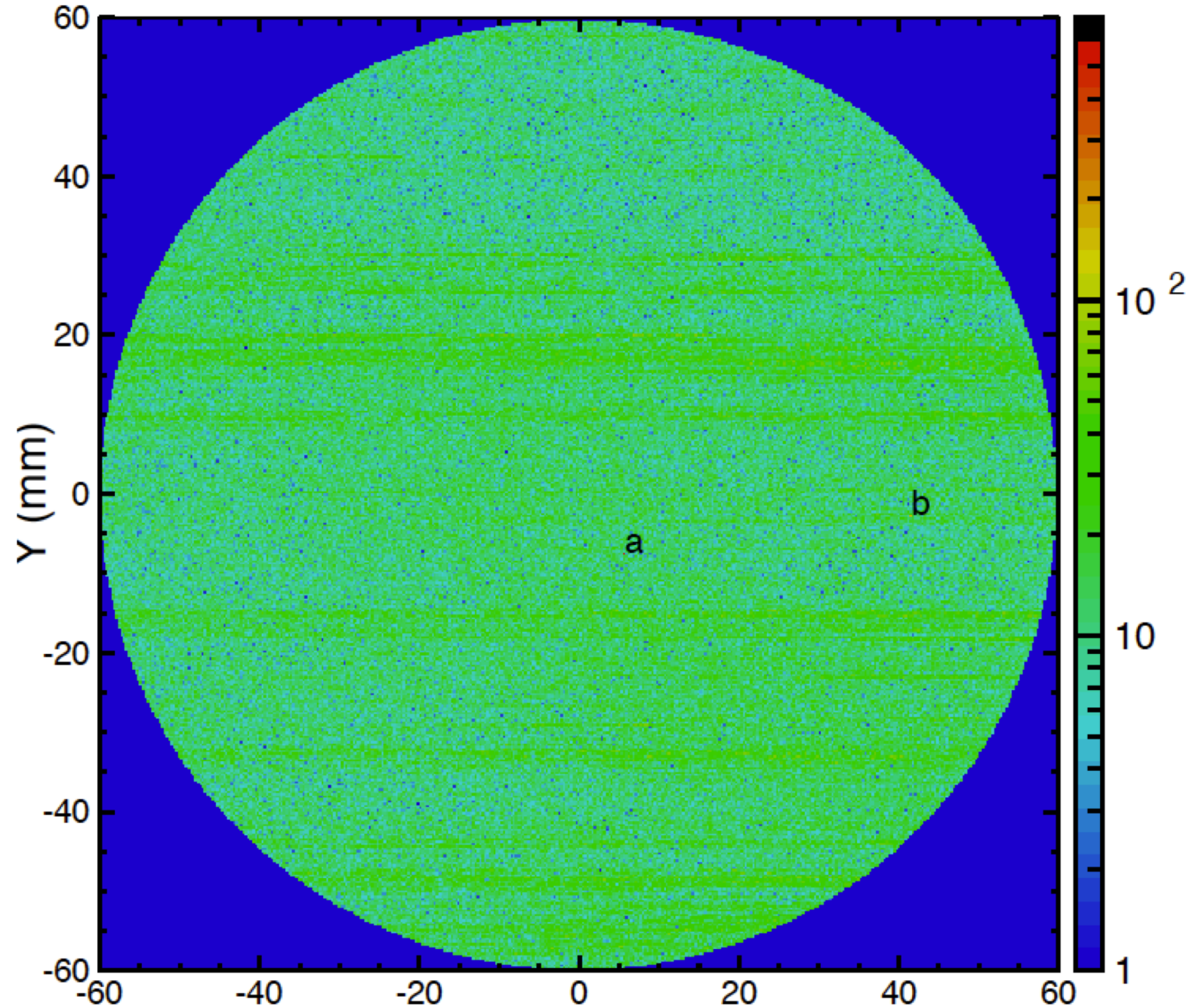
LMA HR coating run **C14058**

Zhang, Billingsley
2019

ETM14 HR Absorption ($\phi_{\text{beam}} = 0.3\text{mm}$, Step= 0.3 mm)

(ppm)

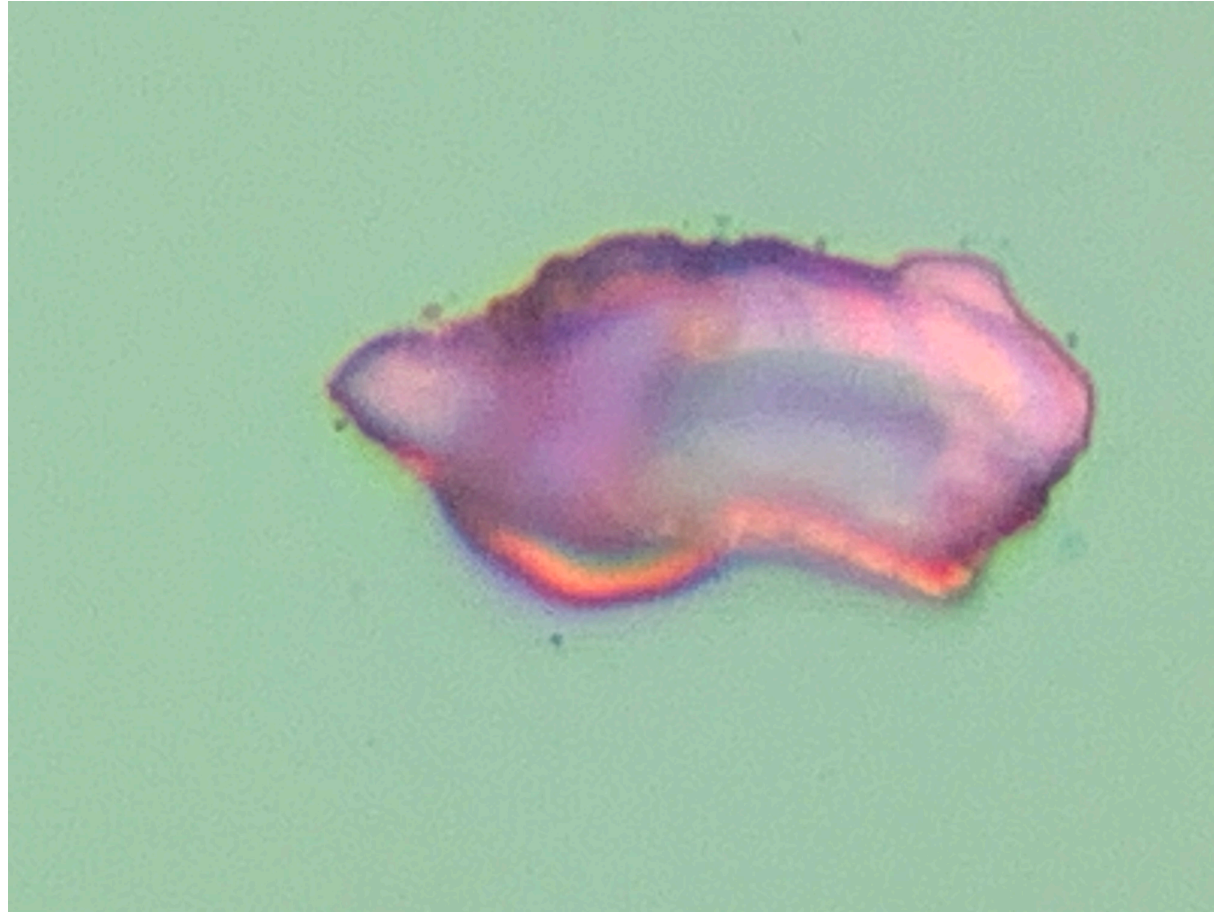
Full report at
LIGO-E1500143



ETM14 Absorber Catalog

No	Scan	Mea. X (mm)	Mea. Y (mm)	Measurement (300 μ m beam)	Micro. X (mm)	Micro. Y (mm)	Microscope 50x Measurement	Microscope Final dimension using calibration of 2 μ m/divison	Optic X (mm from center)	Optic Y (mm from center)
ETM14a	51719	243.112	117.498	~500 ppm	-127.172	116.527	~10 x 20 div	~ 20 μ m x 40 μ m	6.112	7.498
ETM14b	51719	278.838	112.69	~150 ppm	-91.446	111.719	~ 5 div	~ 10 μ m diameter	41.838	2.69

Point a $\sim 20 \times 40 \mu\text{m}$



Point b1 $\sim 10 \mu\text{m}$

