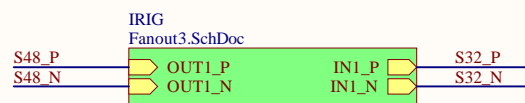
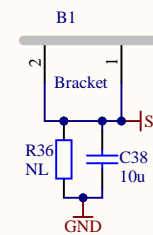
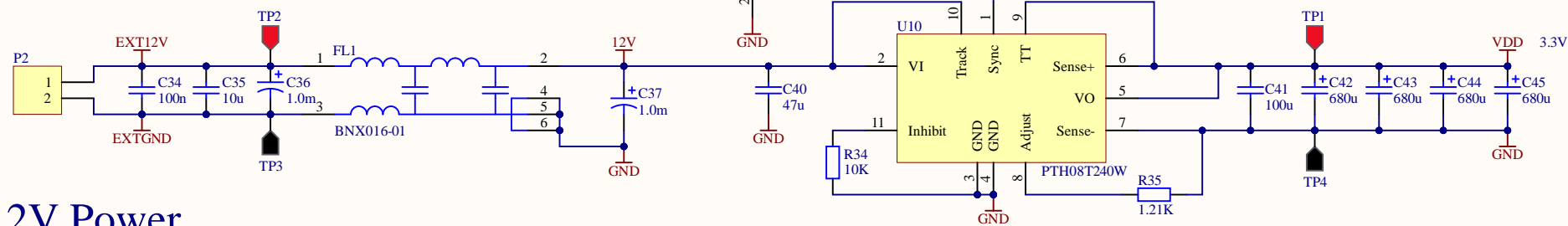


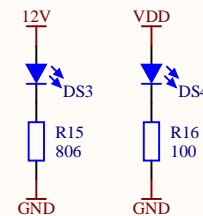
- H1 #4 screw, 3/8"
- H2 #4 screw, 3/8"
- H3 #4 lock washer
- H4 #4 lock washer
- H5 #4 nut
- H6 #4 nut



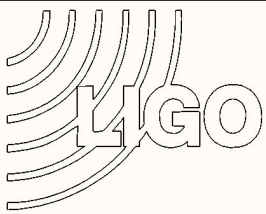
P2A
Terminal block, 5.08mm, 2-Pin, female socket



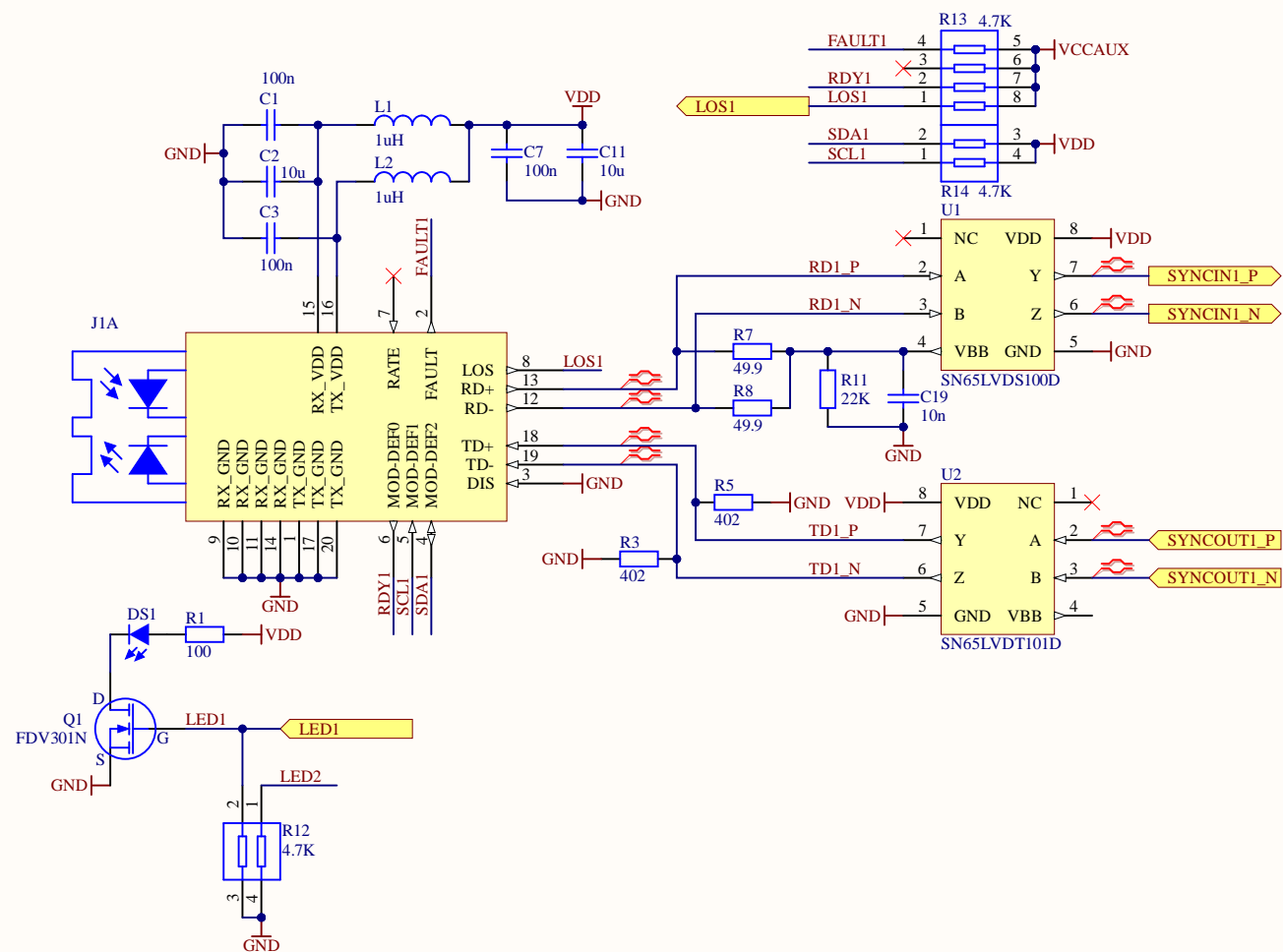
12V Power



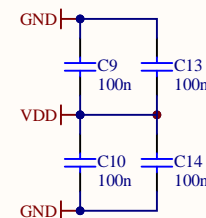
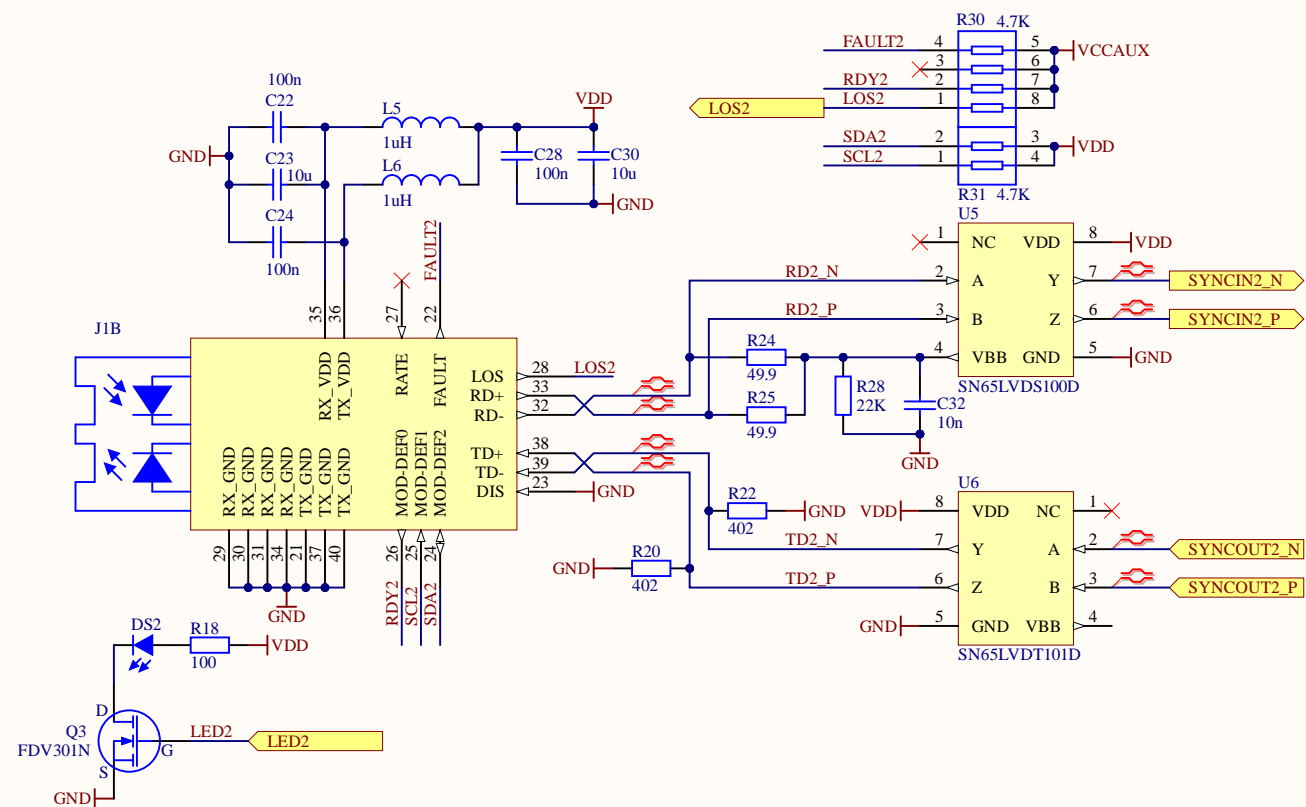
Title Fanout Expansion Option		
Size B	Number D2000302	Revision 1
Date: 3/16/2023	Sheet 1 of 3	
File: C:\Users\d\...\Fanout1.SchDoc	Drawn By: Daniel Sigg	



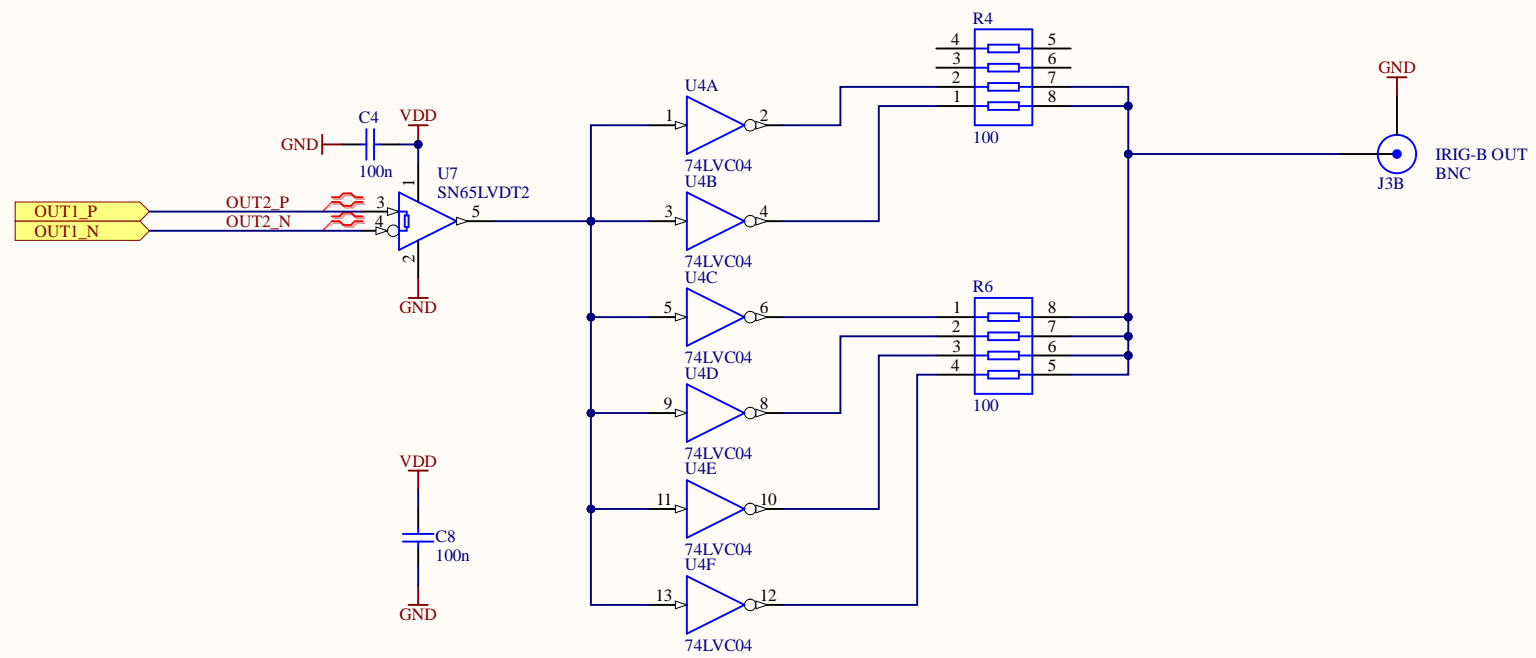
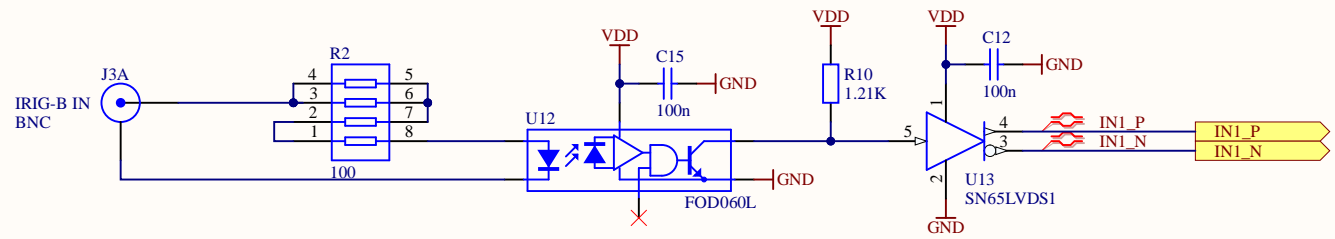
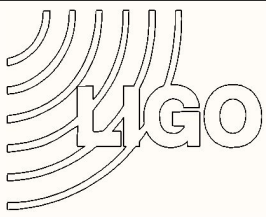
Top Port



Bottom Port



Title Fanout Expansion Option		
Size B	Number D2000302	Revision 1
Date: 3/16/2023	Sheet 2 of 3	
File: C:\Users\...\Fanout2.SchDoc	Drawn By: Daniel Sigg	



Title		
Fanout Expansion Option		
Size	Number	Revision
B	D2000302	1
Date:	3/16/2023	Sheet 3 of 3
File:	C:\Users\d...Fanout3.SchDoc	Drawn By: Daniel Sigg