

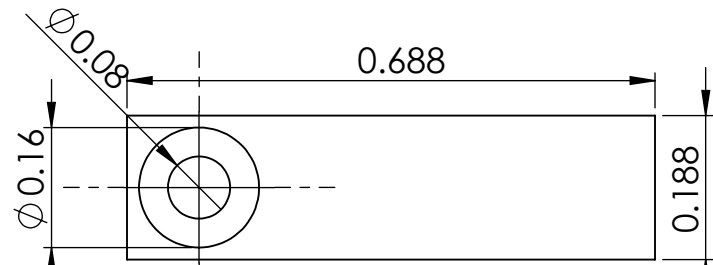
4

3

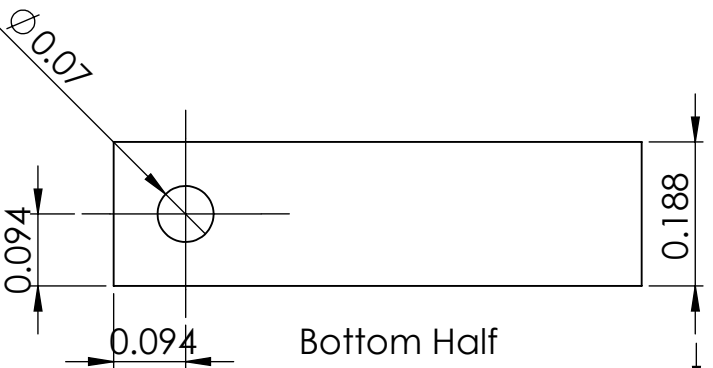
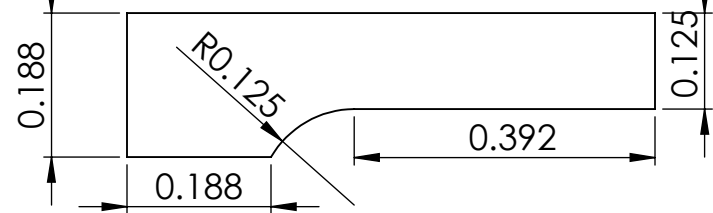
2

1

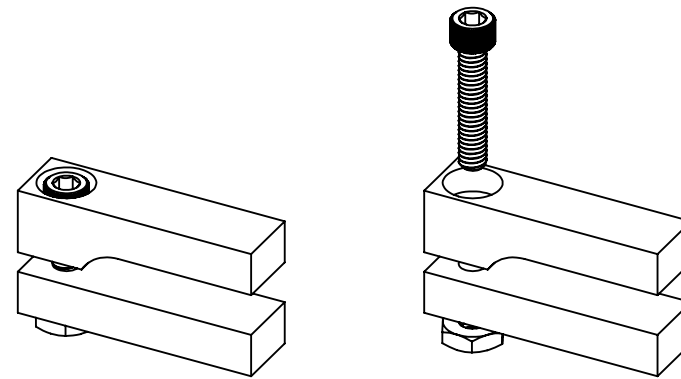
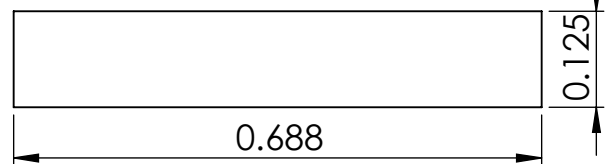
REV.	DATE	DCN #	DRAWING TREE #



Top Half



Bottom Half



Full Assembly

ITEM NO.	PART NUMBER	DESCRIPTION	QTY.
1	Top Half		1
2	Bottom Half		1
3	92196A068	18-8 Stainless Steel Socket Head Screw	1
4	91841A125	18-8 Stainless Steel Hex Nut	1

NOTES AND TOLERANCES: (UNLESS OTHERWISE SPECIFIED)

DIMENSIONS ARE IN

TOLERANCES:
.XX ±
.XXX ±

ANGULAR ± °

1. INTERPRET DRAWING PER ASME Y14.5-1994.
2. REMOVE ALL SHARP EDGES. .005-.015. FOR MACHINED PARTS. ROUND ALL EDGES APPROXIMATELY R.02 FOR SHEET METAL PARTS.
3. DO NOT SCALE FROM DRAWING.
4. ALL MACHINING FLUIDS MUST BE FULLY SYNTHETIC, FULLY WATER SOLUBLE AND FREE OF SULFUR, SILICONE, AND CHLORINE.

MATERIAL

FINISH

μinch



CALIFORNIA INSTITUTE OF TECHNOLOGY
MASSACHUSETTS INSTITUTE OF TECHNOLOGY

SYSTEM

SUB-SYSTEM

NEXT ASSY

PART NAME

Test Mass Shroud Clamp

DESIGNER Jasmine Terrones

DRAFTER

CHECKER

APPROVAL

SIZE DWG. NO.

A

D2000434

REV.

v1

SCALE: 2:1

PROJECTION:



SHEET 1 OF 1

4

3

2

1