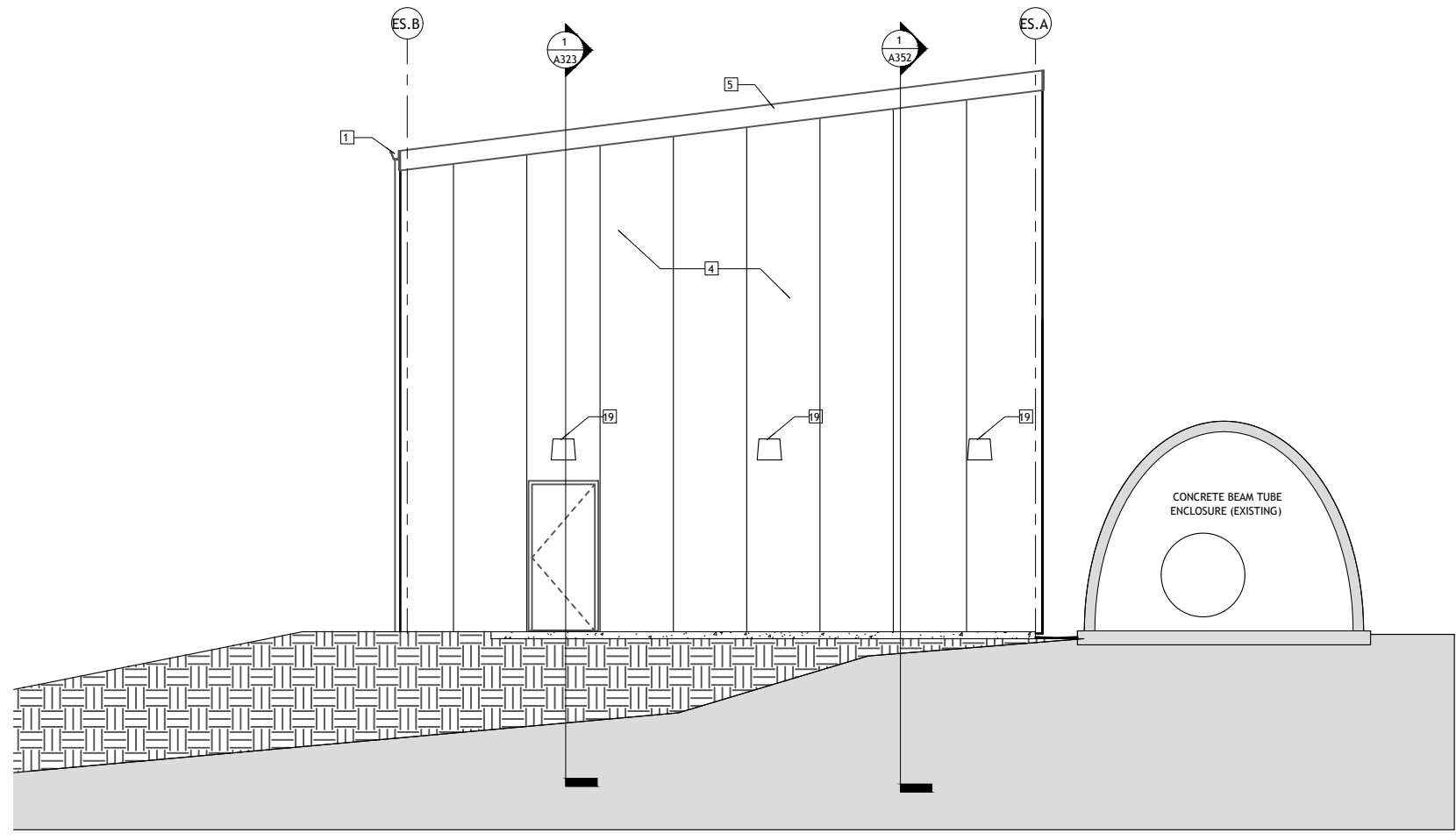


1 FCES NORTH ELEVATION
A303 1/4" = 1'-0"



2 FCES SOUTH ELEVATION
A303 1/4" = 1'-0"

KEYNOTES - EXTERIOR ELEVATION

- 1 GUTTER
- 2 NOT USED
- 3 INSULATED METAL ROOF PANEL
- 4 INSULATED METAL WALL PANEL
- 5 FASCIA
- 6 NOT USED
- 7 NOT USED
- 8 OVERHEAD DOOR
- 9 EXPANSION JOINT AND COVER
- 11 PATCH AND REPAIR EXISTING WALL AT NEW WORK
- 12 DOWNSPOUT
- 13 EXISTING RETURN AIR GRILLE TO BE RELOCATED, SEE MECH.
- 14 CUT EXISTING METAL PANEL
- 15 EXISTING HOLLOW METAL DOOR TO BE REMOVED
- 16 EXISTING LIGHT TO REMAIN
- 17 EXISTING HOLLOW METAL DOOR TO BE REMOVED
- 18 RELOCATED RETURN AIR GRILLE LOCATION. ALIGN TOP TO EXISTING GRILLES.
- 19 EXTERIOR LIGHT, SEE ELECTRICAL

LIGO-D2100302-v1

D DANA ENGINEERING, INC.
PROFESSIONAL SERVICE CORPORATION
4000 SOUTH IRBY STREET
KENNEWICK, WA 99337
(509) 582-0126

Revisions		
No.	Description	Date

LIGO Laboratory A+ Project
Hanford, WA

FCES ELEVATIONS

	project number	21262.00	drawing number	A303
	date	01.13.21		
	phase	CONSTRUCTION		