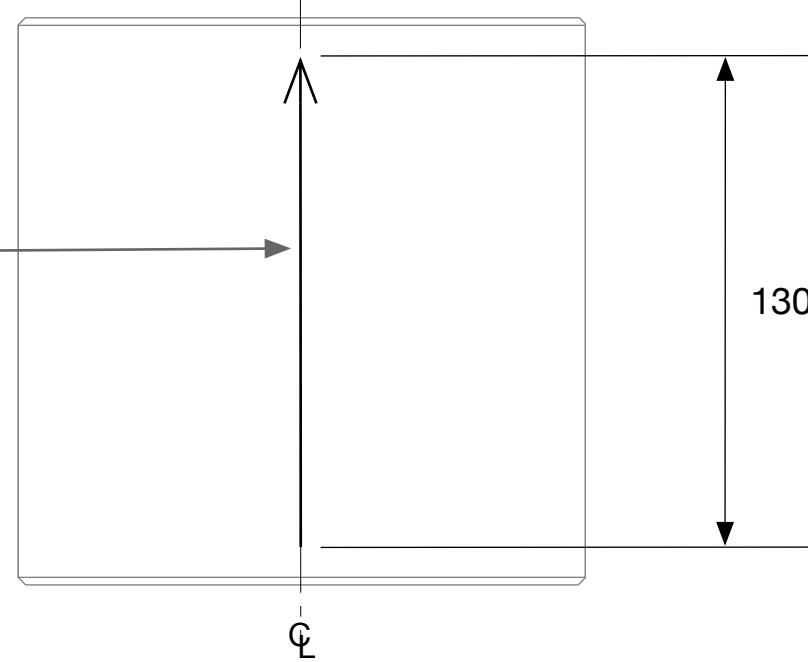


Top view

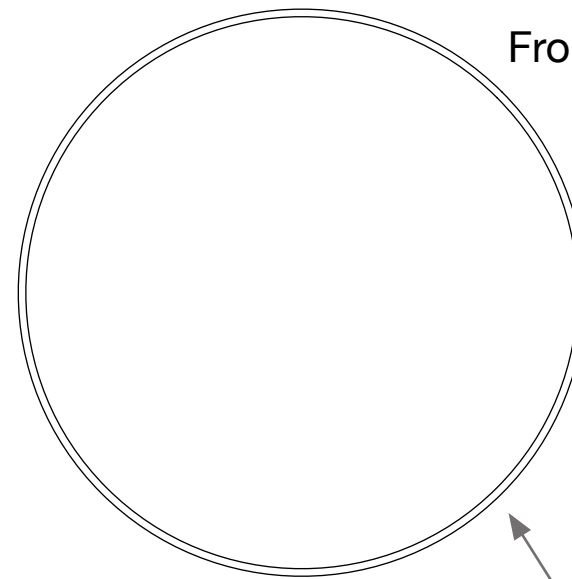
ETCH OR GRIND LEGIBLE REFERENCE GROOVE (0.25mm 0.05mm WIDE) ALONG CL PARALLEL TO THE CYLINDRICAL AXIS WITH ARROW POINT TO SURFACE "S1"



130mm ± 1.0mm

⌀

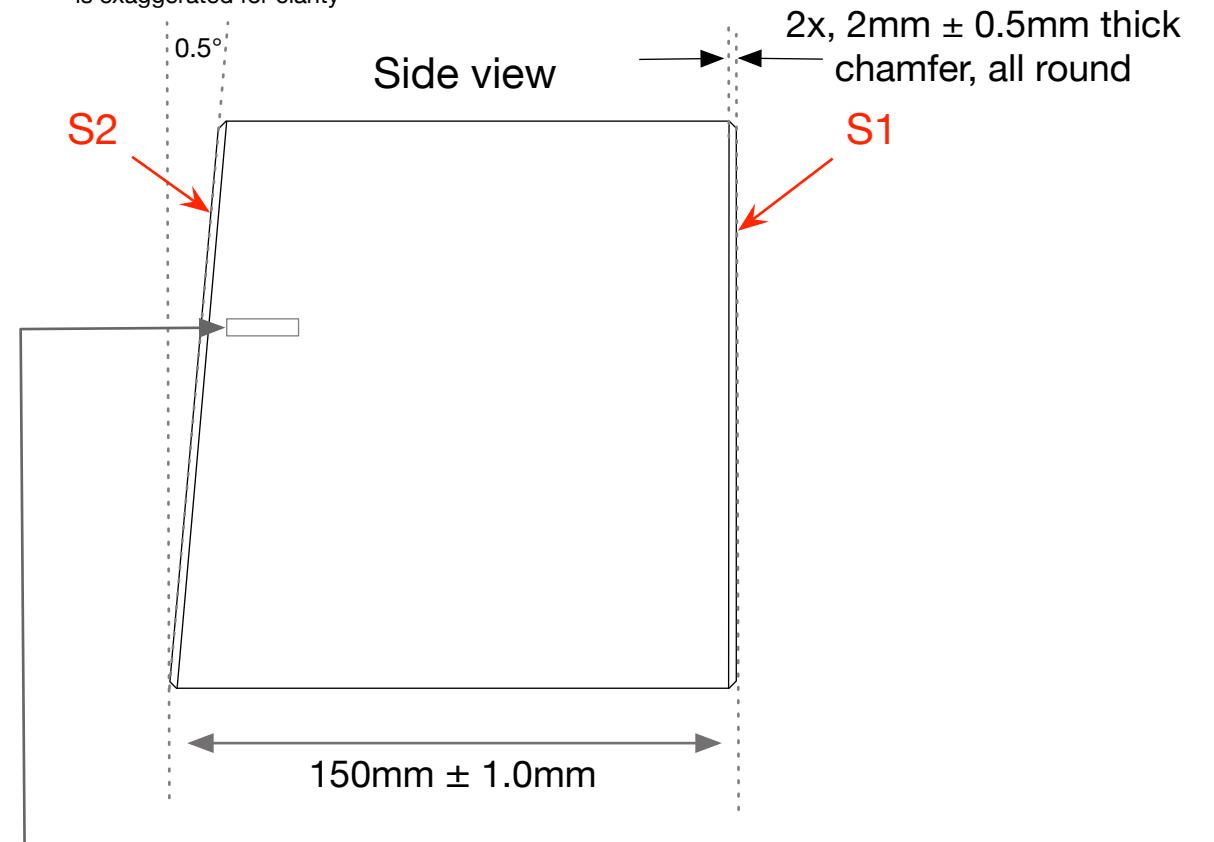
Front view



150mm ± 1.0mm diameter

note: in this drawing the angle is exaggerated for clarity

Side view



ETCH OR GRIND SERIAL NUMBER, APPROX. WHERE SHOWN, LETTERING APPROX. 4mm HIGH. Each optic will have a serial Number. "ITMXX" or "ETMXX" shall be etched, ground or sandblasted on the barrel of the optic where XX is incremental and the starting number is supplied with the contract

MANUFACTURE NOTES:

1. DO NOT SCALE FROM DRAWINGS
2. BARREL SIDE and BEVEL POLISH PER E2100299, Section 2.6
3. TYPE 1 - FINISH SURFACES S1 AND S2 PER E2100299
4. TYPE 2 - FINISH SURFACES S1 AND S2 PER E2100296

PART NAME:

MARINER 40 - TM SUBSTRATE: Type1 - ITM, Type 2 - ETM

DRAWING NUMBER: D2100536-v2

NAME: Aidan Brooks

DATE: 13-Aug-2021