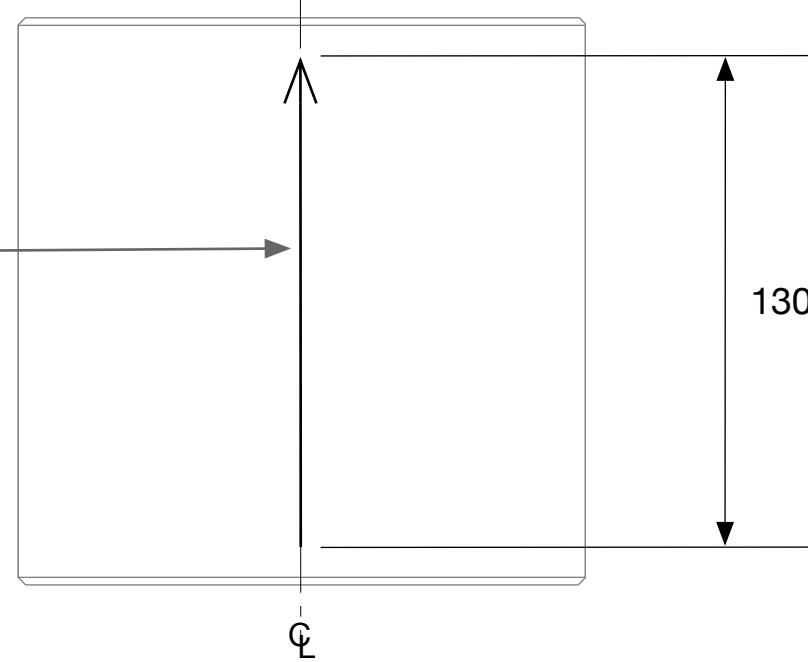


Top view

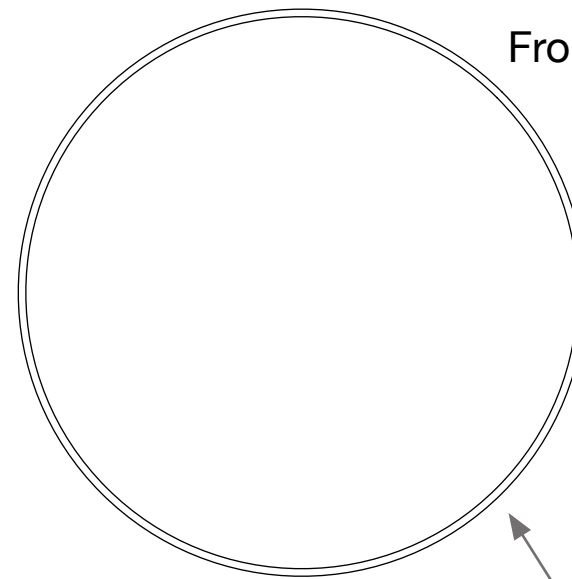
ETCH OR GRIND LEGIBLE REFERENCE GROOVE (0.25mm 0.05mm WIDE ) ALONG CL PARALLEL TO THE CYLINDRICAL AXIS WITH ARROW POINT TO SURFACE "S1"



130mm ± 1.0mm

⌀

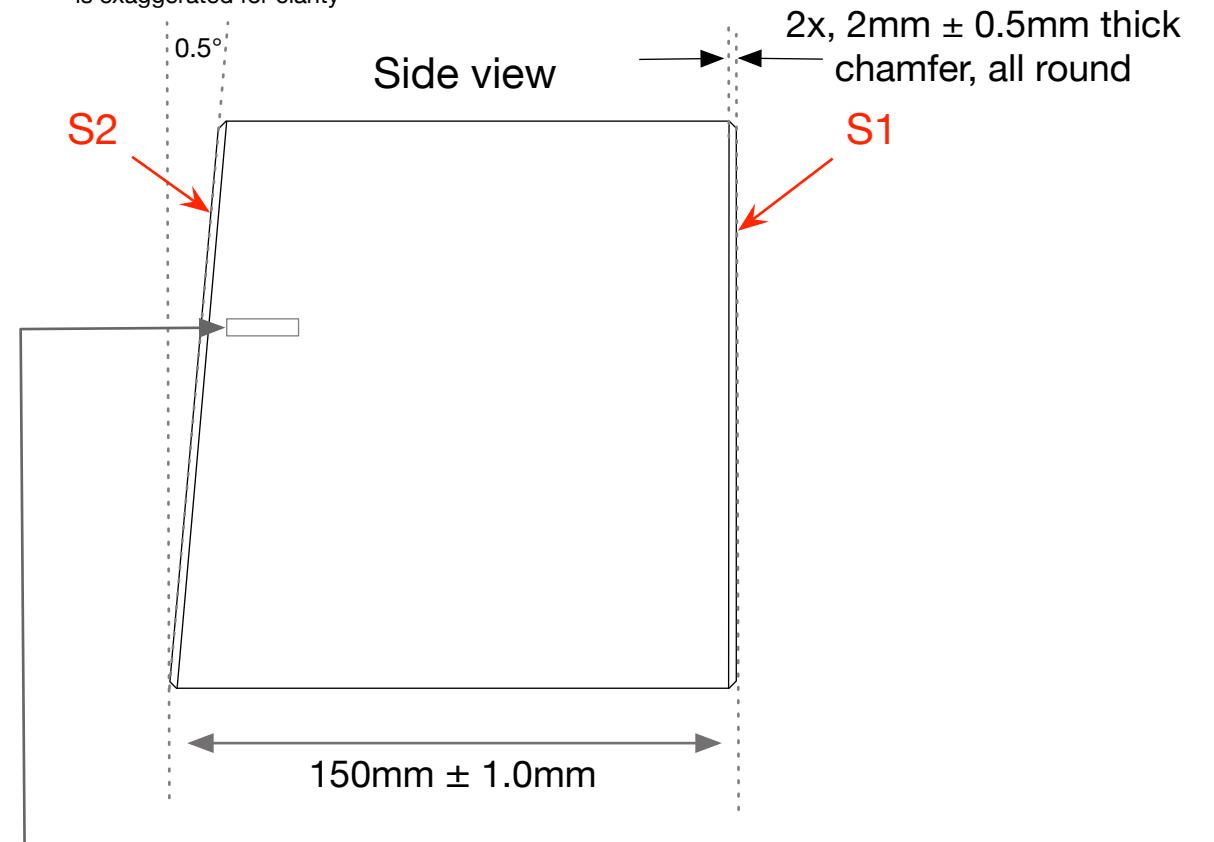
Front view



150mm ± 1.0mm diameter

note: in this drawing the angle is exaggerated for clarity

Side view



2x, 2mm ± 0.5mm thick chamfer, all round

0.5°

S2

S1

150mm ± 1.0mm

ETCH OR GRIND SERIAL NUMBER, APPROX. WHERE SHOWN, LETTERING APPROX. 4mm HIGH. Each optic will have a serial Number. "ITMXX" or "ETMXX" shall be etched, ground or sandblasted on the barrel of the optic where XX is incremental and the starting number is supplied with the contract

**MANUFACTURE NOTES:**

1. DO NOT SCALE FROM DRAWINGS
2. BARREL SIDE and BEVEL POLISH PER E2100299, Section 2.6
3. TYPE 1 - FINISH SURFACES S1 AND S2 PER E2100299
4. TYPE 2 - FINISH SURFACES S1 AND S2 PER E2100296

**PART NAME:**

MARINER 40 - TM SUBSTRATE: Type1 - ITM, Type 2 - ETM, Samples

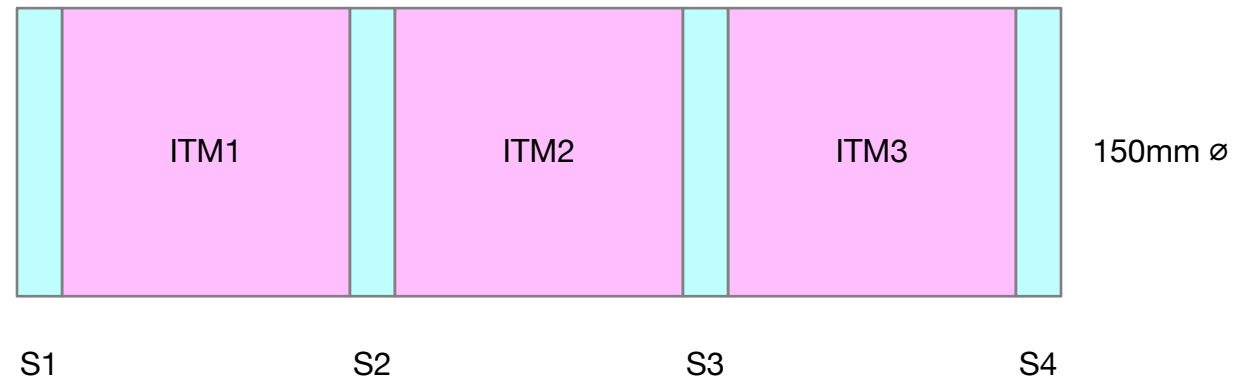
**DRAWING NUMBER:** D2100536-v3

**NAME:** Aidan Brooks

**DATE:** 2-Sep-2021

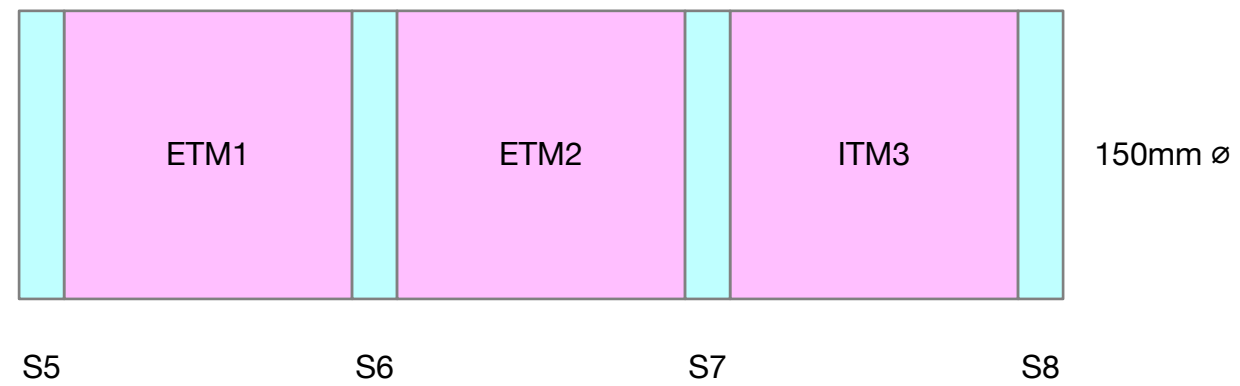
# Samples

## ITM silicon ingot



ITM: 150mm thick  
Vendor to provide sample disks (Sx): 10mm thick cut from the silicon ingot as indicate above.

## ETM silicon ingot



ETM: 150mm thick  
Vendor to provide sample disks (Sx): 10mm thick cut from the silicon ingot as indicate above.

MANUFACTURE NOTES: