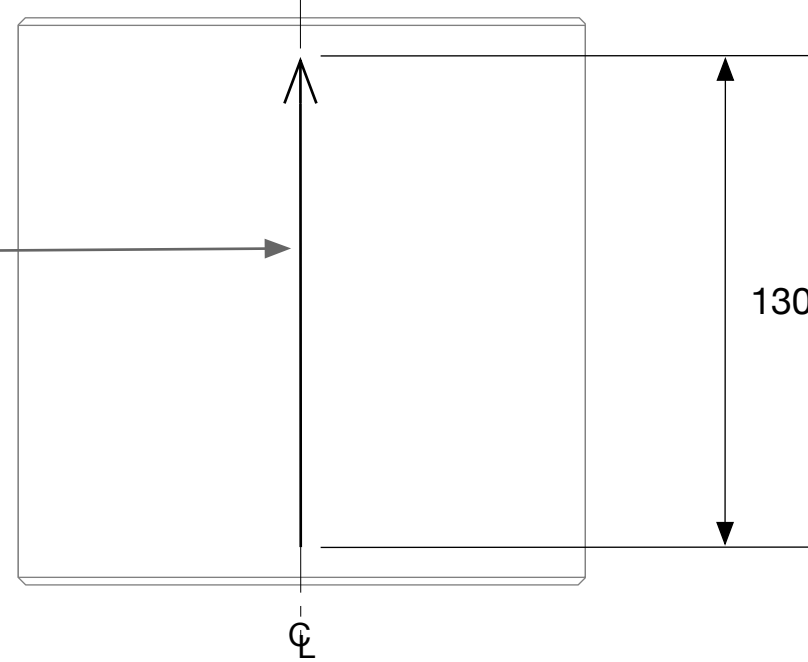


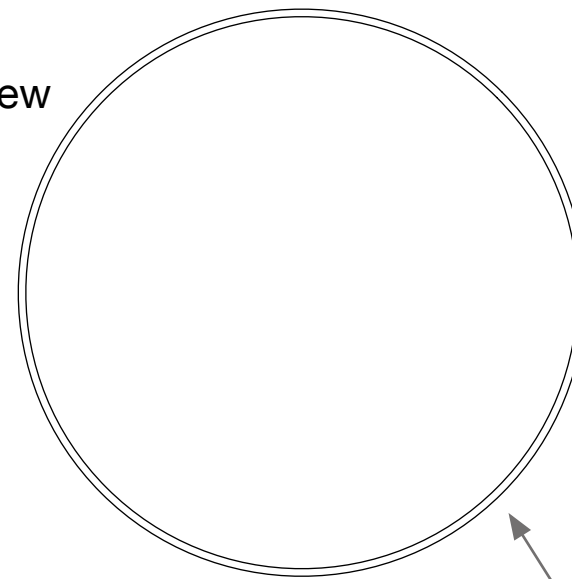
Top view

ETCH OR GRIND LEGIBLE REFERENCE GROOVE (0.25mm 0.05mm WIDE) ALONG CL PARALLEL TO THE CYLINDRICAL AXIS WITH ARROW POINT TO SURFACE "S1"



130mm ± 1.0mm

Front view



150mm ± 1.0mm diameter

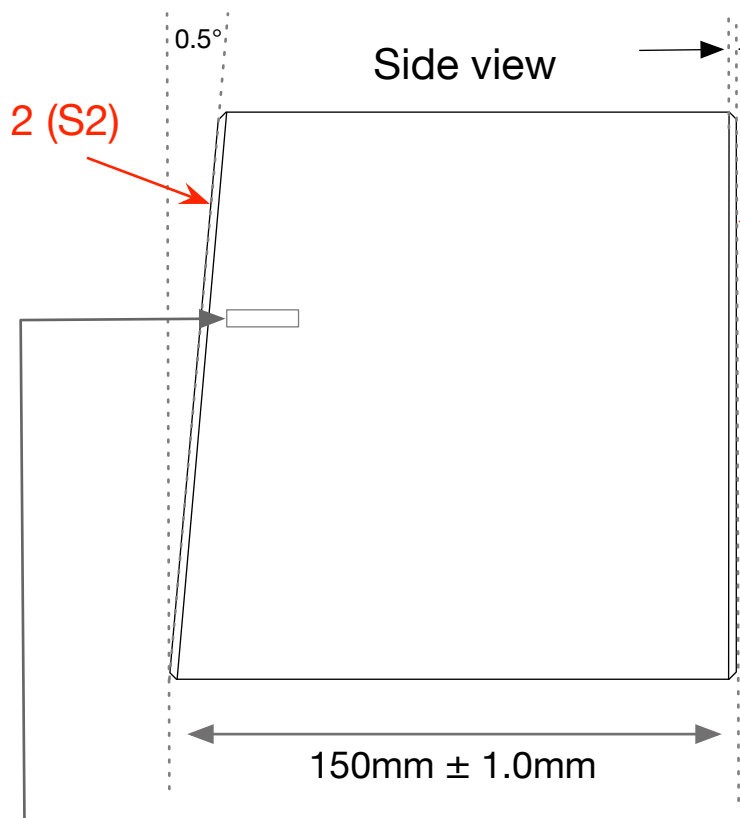
note: in this drawing the angle is exaggerated for clarity

Side view

Surface 2 (S2)

Surface 1 (S1)

2x, 2mm ± 0.5mm thick chamfer, all round



0.5°

150mm ± 1.0mm

ETCH OR GRIND SERIAL NUMBER, APPROX. WHERE SHOWN, LETTERING APPROX. 4mm HIGH. Each optic will have a serial Number. "ITMXX" or "ETMXX" shall be etched, ground or sandblasted on the barrel of the optic where XX is incremental and the starting number is supplied with the contract

MANUFACTURE NOTES:

- 1. DO NOT SCALE FROM DRAWINGS
- 2. BARREL SIDE and BEVEL POLISH PER E2100299, Section 2.6
- 3. TYPE 1 - FINISH SURFACES S1 AND S2 PER E2100299
- 4. TYPE 2 - FINISH SURFACES S1 AND S2 PER E2100296

PART NAME:

MARINER 40 - TM SUBSTRATE: Type1 - ITM, Type 2 - ETM, Samples

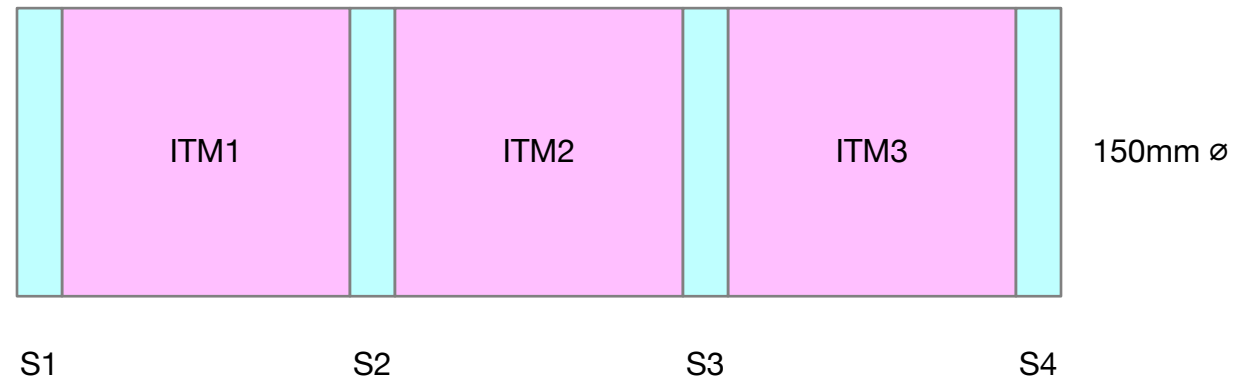
DRAWING NUMBER: D2100536-v4

NAME: Aidan Brooks

DATE: 16-Sep-2021

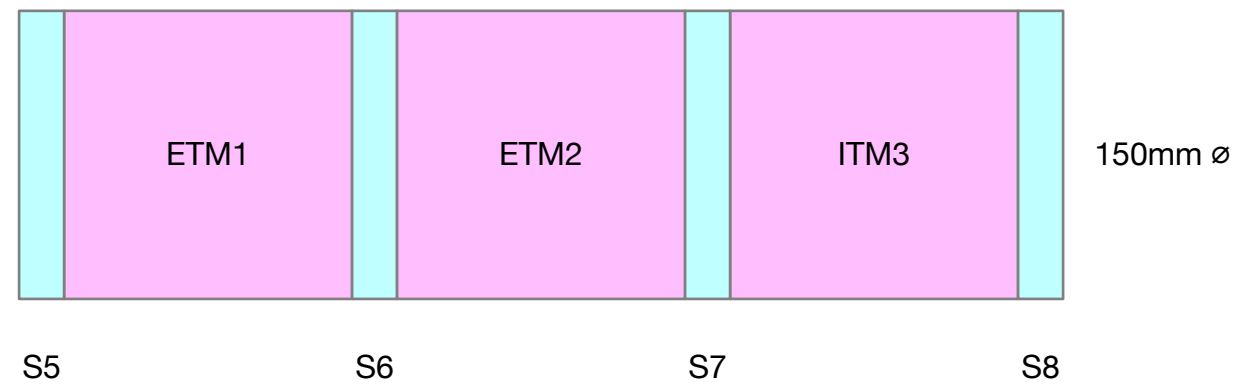
Samples

ITM silicon ingot



ITM: 150mm thick
Vendor to provide sample disks (Sx): 10mm thick cut from the silicon ingot as indicate above.

ETM silicon ingot



ETM: 150mm thick
Vendor to provide sample disks (Sx): 10mm thick cut from the silicon ingot as indicate above.

MANUFACTURE NOTES: