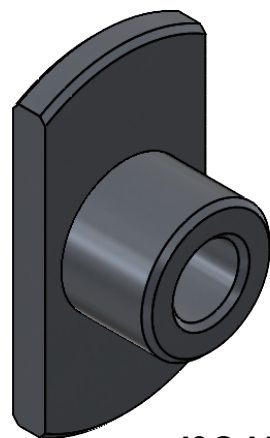
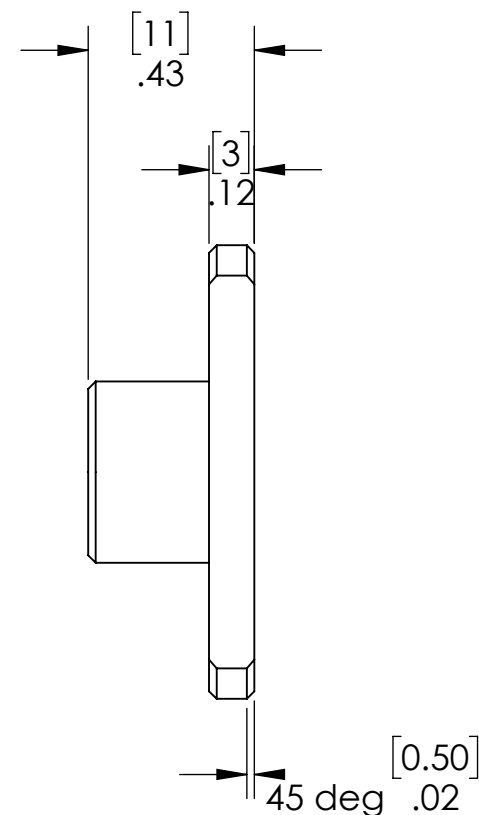
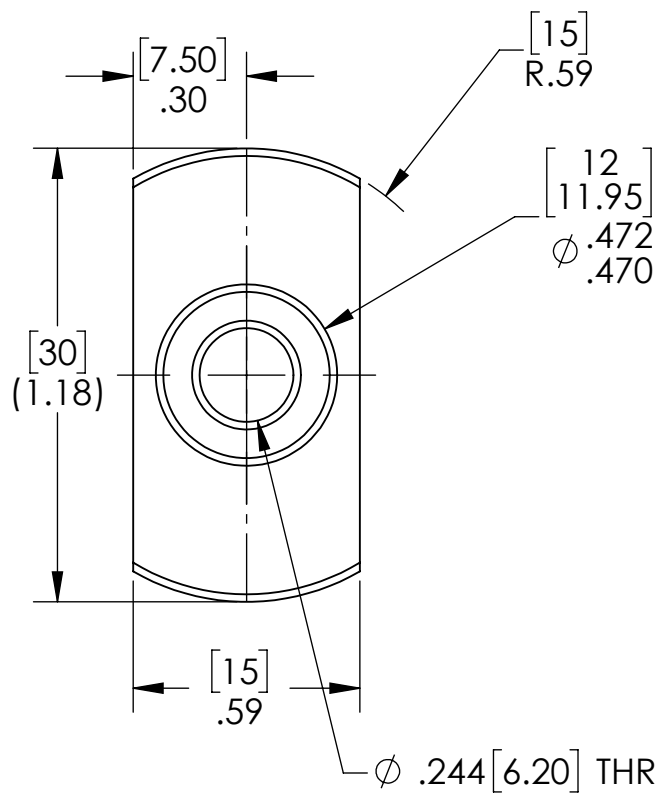


**NOTES CONTINUED:**

5. SCRIBE, ENGRAVE, LASER MARK OR MECHANICALLY STAMP (NO DYES OR INKS) A UNIQUE THREE DIGIT SERIAL NUMBER & REVISION NUMBER ON EACH PART. SERIAL NUMBERS START AT 001 FOR THE FIRST ARTICLE AND PROCEED CONSECUTIVELY. BAG AND TAG PARTS WITH THEIR DRAWING PART NUMBER, REVISION, VARIANT OR "TYPE" (IF APPLICABLE), AND QUANTITY. IF PARTS ARE TOO SMALL TO SCRIBE, BAGGING AND TAGGING ALONE IS SUFFICIENT.  
EXAMPLE (PART): 001-v1  
EXAMPLE (TAG): DXXXXXX-VY, TYPE-XX, QTY: TBD

6. FINISH: BLACK ANODIZE PER MIL-A-8625, TYPE III, CL2.

REV.	DATE	DCN #	DRAWING TREE #
v1	6/15/2023	e2300156-x0	-
-	-	-	-
-	-	-	-

**ISO VIEW****NOTES AND TOLERANCES: (UNLESS OTHERWISE SPECIFIED)**

DIMENSIONS ARE IN INCHES [MM]

**TOLERANCES:**

.XX ± .01  
.XXX ± .005

ANGULAR ± 0.5°

1. INTERPRET DRAWING PER ASME Y14.5-1994.  
2. REMOVE ALL SHARP EDGES, .005-.015, FOR MACHINED PARTS.  
3. DO NOT SCALE FROM DRAWING.  
4. ALL MACHINING FLUIDS MUST BE FULLY SYNTHETIC, FULLY WATER SOLUBLE AND FREE OF SULFUR, SILICONE, AND CHLORINE.

**MATERIAL**

6061-T6 (SS)

**FINISH**

63 μinch



CALIFORNIA INSTITUTE OF TECHNOLOGY  
MASSACHUSETTS INSTITUTE OF TECHNOLOGY

**SYSTEM**

LIGO

**SUB-SYSTEM**

PSL

**NEXT ASSY**

D1101123

**PART NAME**

aLIGO PSL PD HOUSING ASSY., CLAMP HOLDER

**DESIGNER**

alopez

15/06/2023

**DRAFTER**

alopez

15/06/2023

**CHECKER**

esanchez

15/06/2023

**APPROVAL**

SEE DCC

SEE DCC

**SIZE**

A

**DWG. NO.**

D2300193

**REV.**

v1

SCALE: 2:1

PROJECTION:



SHEET 1 OF 1