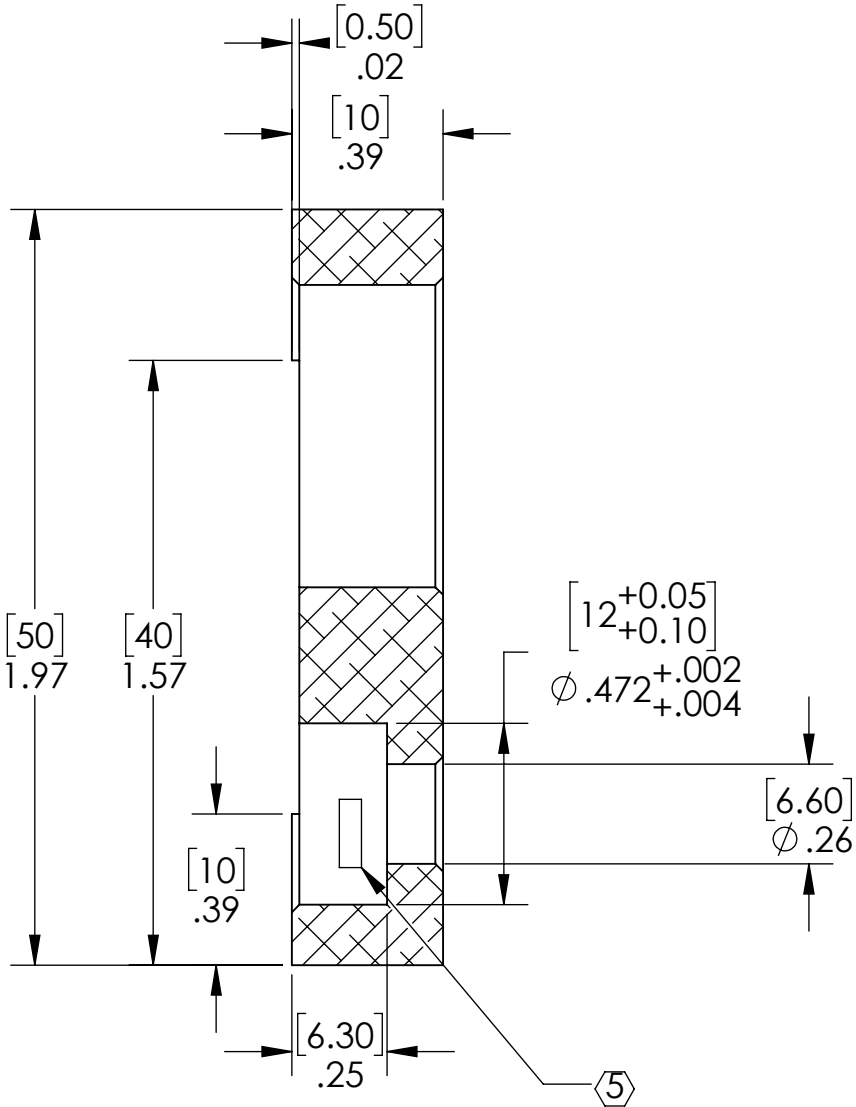
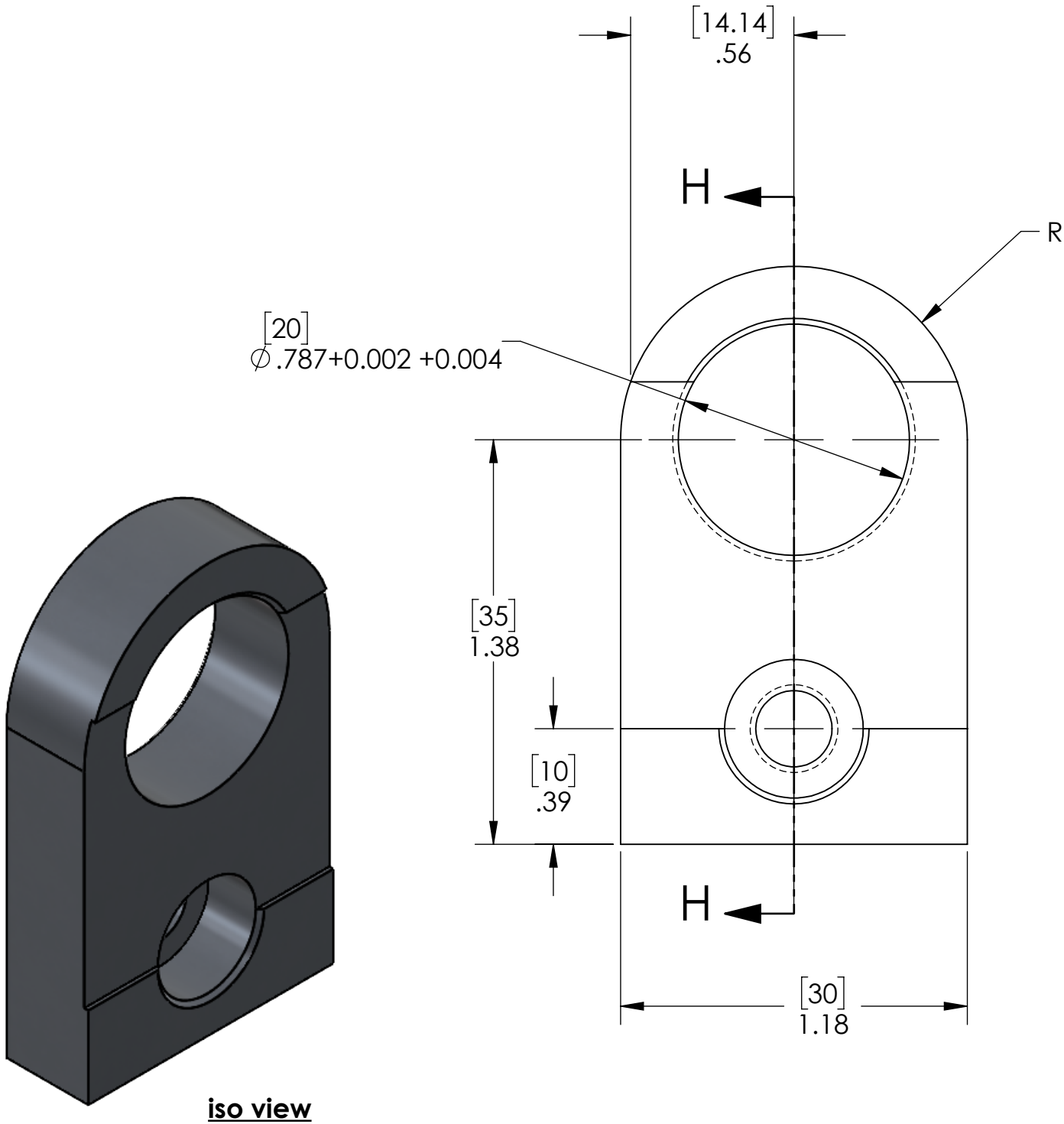


NOTES CONTINUED:
⑤ SCRIBE, ENGRAVE (A VIBRATORY TOOL MAY BE USED), LASER MARK OR MECHANICALLY STAMP (NO INKS OR DYES) DRAWING PART NUMBER, REVISION (AND VARIANT OR "TYPE" IF APPLICABLE) ON NOTED SURFACE OF PART FOLLOWED ON THE NEXT LINE WITH A THREE DIGIT SERIAL NUMBER. SERIAL NUMBERS START AT 001 FOR THE FIRST ARTICLE AND PROCEED CONSECUTIVELY. USE MINIMUM 0.12" HIGH CHARACTERS, UNLESS THE SIZE OF THE PART DICTATES SMALLER CHARACTERS. EXAMPLE: DXXXXXX-VY, TYPE-XX, S/N XXX

REV.	DATE	DCN #	DRAWING TREE #
v1	6/15/2023	e2300156-x0	-
-	-	-	-
-	-	-	-

6. FINISH: BLACK ANODIZE PER MIL-A-8625, TYPE III, CL2.



NOTES AND TOLERANCES: (UNLESS OTHERWISE SPECIFIED)				PART NAME			
DIMENSIONS ARE IN INCHES [MM]				aLIGO PSL PD HOUSING ASSY., CLAMP			
TOLERANCES: .XX ± .01 .XXX ± .005				DESIGNER alopez 15/06/2023			
ANGULAR ± 0.5°				DRAFTER alopez 15/06/2023			
MATERIAL 6061-T6 (SS)				CHECKER esanchez 15/06/2023			
FINISH 63 μinch				APPROVAL SEE DCC SEE DCC			
NEXT ASSY D1101123				SCALE: 2:1			
				PROJECTION:			
				SHEET 1 OF 1			