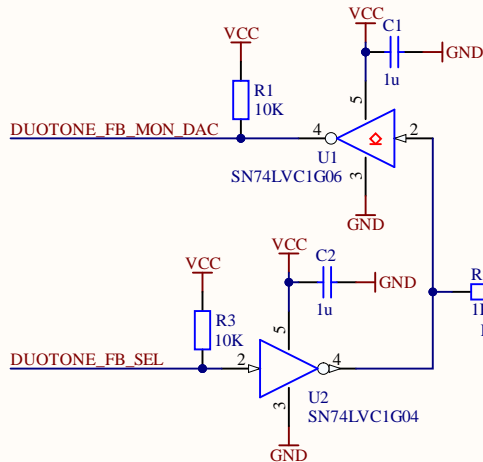
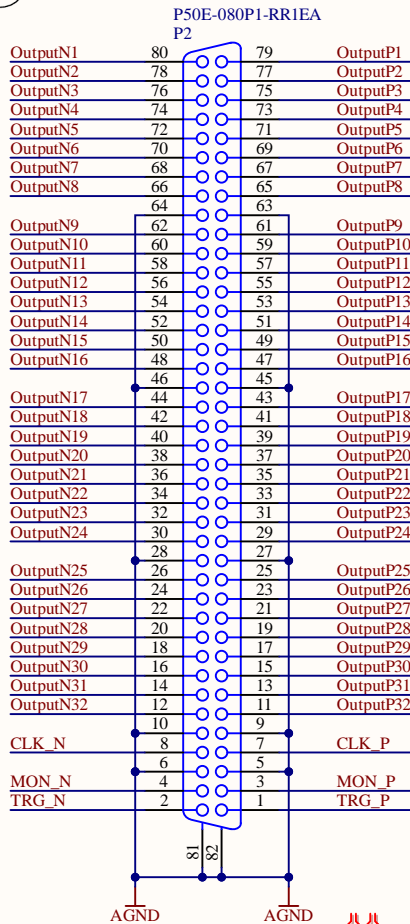
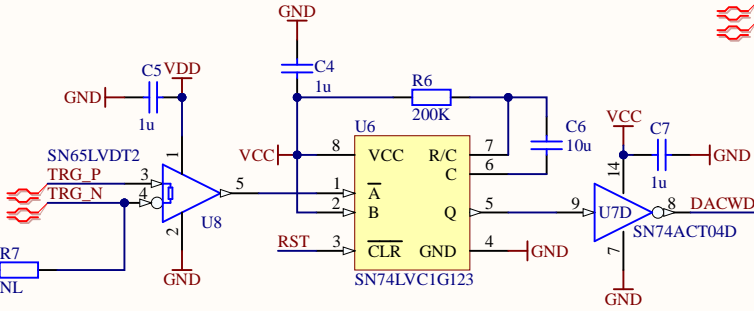
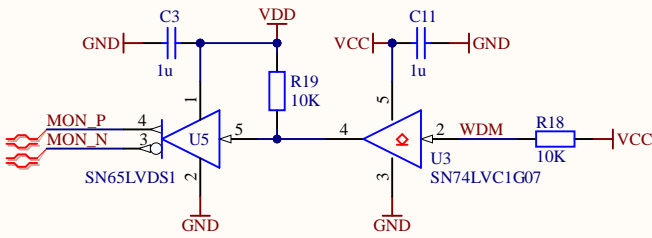




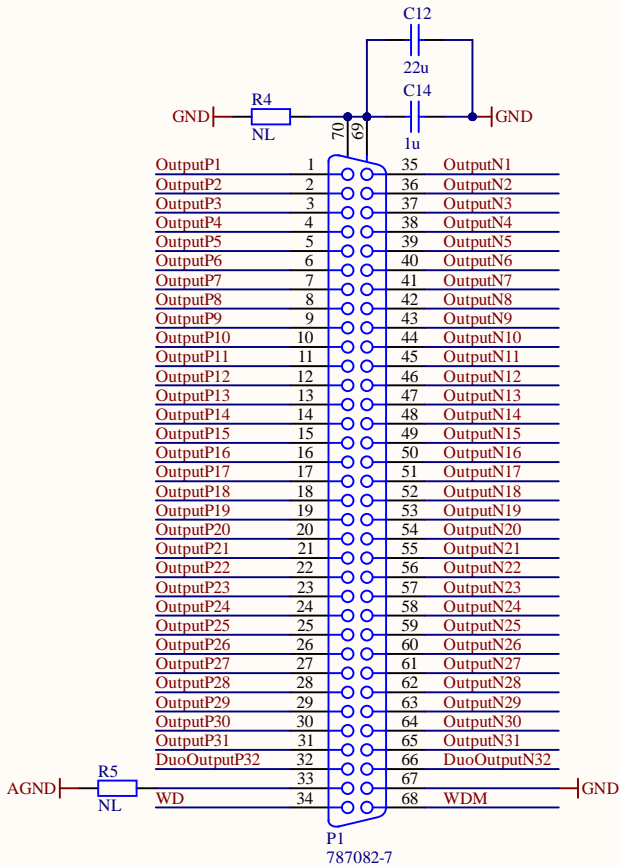
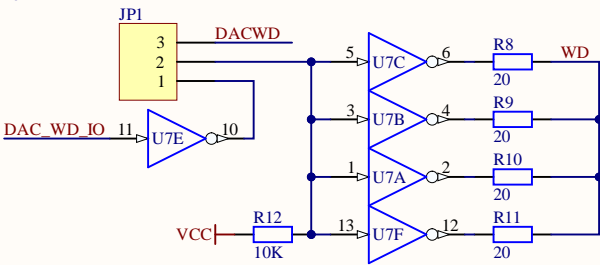
## Diff Outputs from DAC



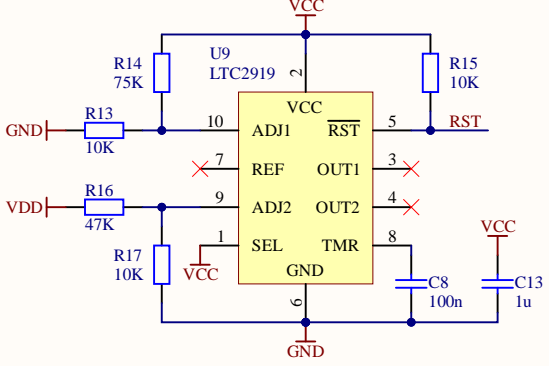
No output from DAC Ch 32 when Duotone FB Select engaged.  
DAC Ch 32 tied to Duotone\_FB of ADC when  
Duotone FB Select is engaged (input to board is high).



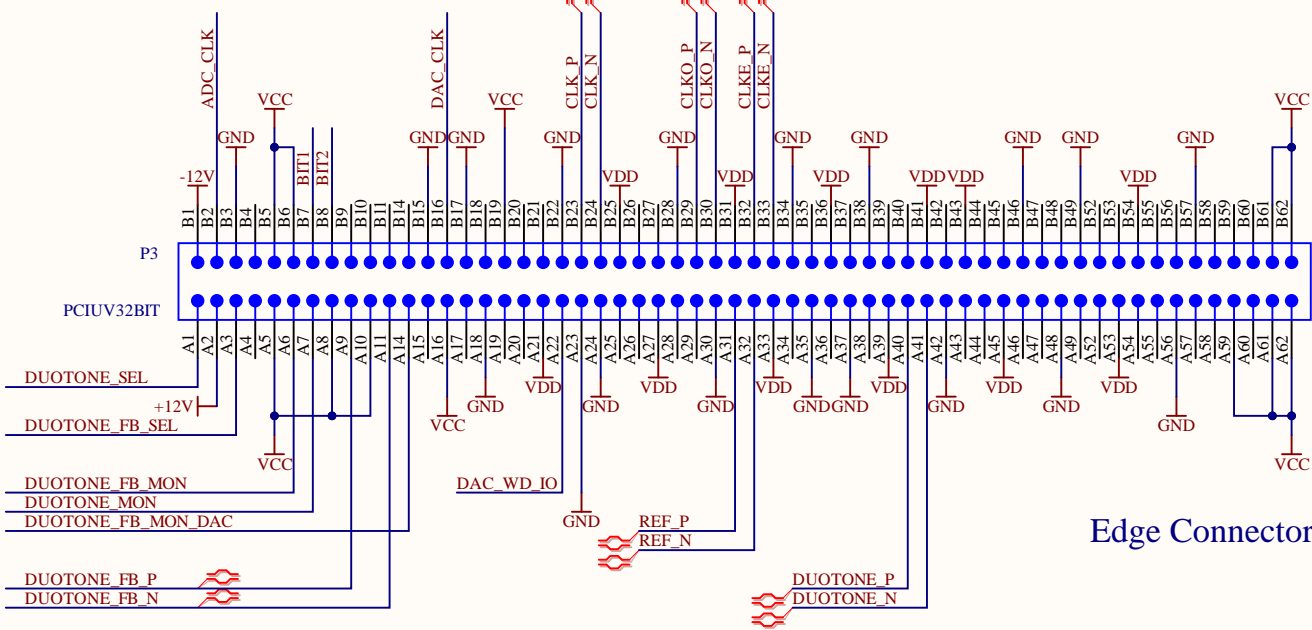
Watchdog Circuit (2 sec nominal)



Reset Circuit (1 sec delay)



UV < 4.25V, UV < 2.85V



Edge Connector

- PN1 Mounting bracket Gompf 9334-0158LC  
PN2 Screwlock Kit Digi-Key A23470-ND

