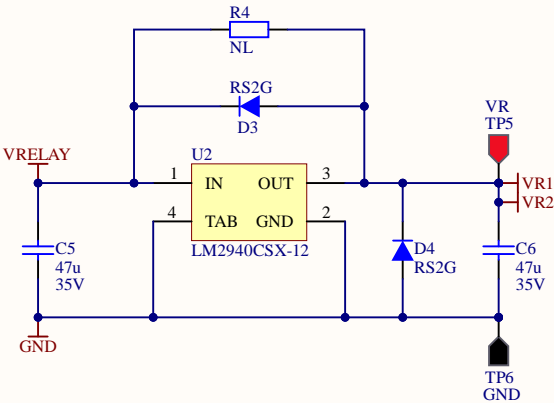
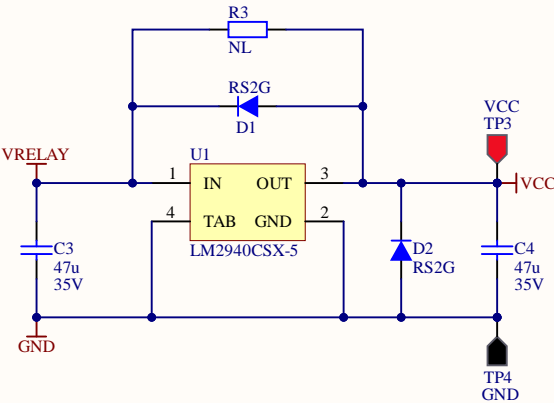
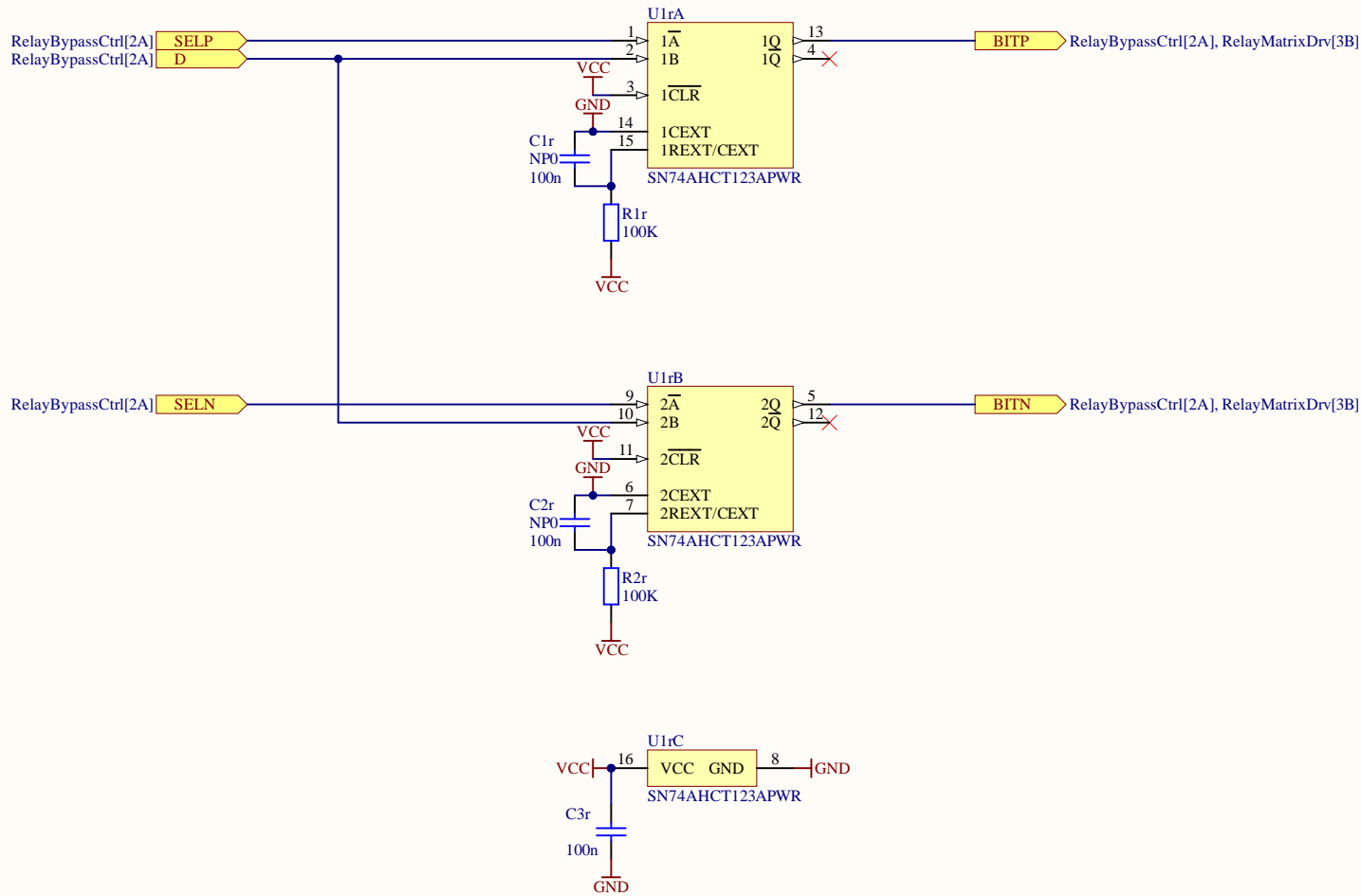


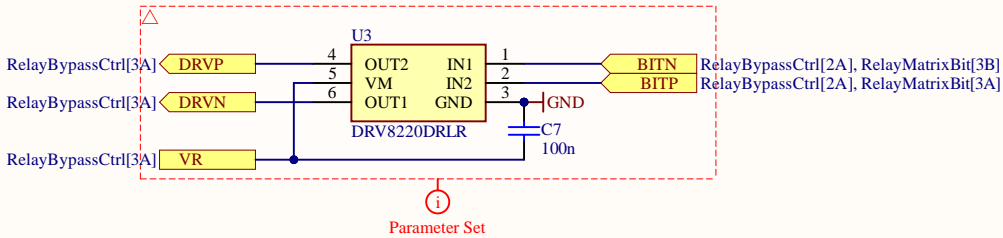
Off board connector for additional relays
Usable for enabling/disabling AA and AI filters



Title			Relay Bypass 8: Controls	
Size	Number	Revision		
B	D2500176	1		
Date:	6/09/2025	Sheet 2 of 6		
File:	C:\Users\...\RelayBypassCtrl.SchDoc	Drawn By: Daniel Sigg		



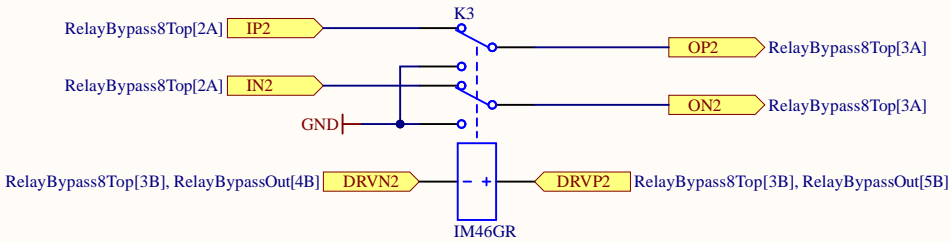
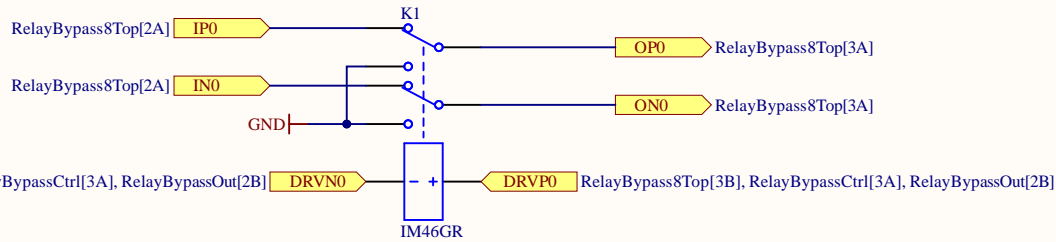
Title			Relay Matrix Bit Control	
Size	Number	D2500176		Revision
A				1
Date:	6/09/2025		Sheet 3 of 6	
File:	C:\Users\...\RelayMatrixBit.SchDoc		Drawn By: Daniel Sigg	



Title			Relay Bypass 8: Controls	
Size	Number	D2500176		Revision
A				1
Date:	6/09/2025	Sheet 4 of 6		
File:	C:\Users\...\RelayMatrixDrv.SchDoc	Drawn By: Daniel Sigg		

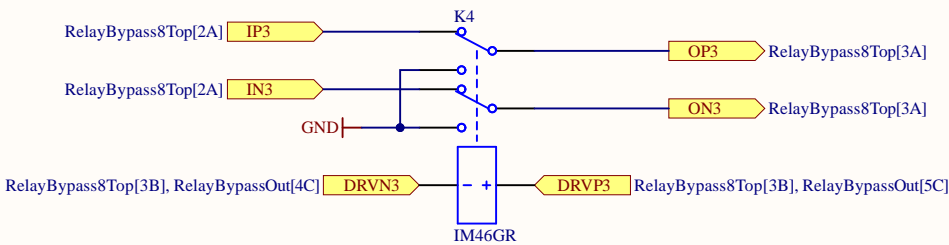
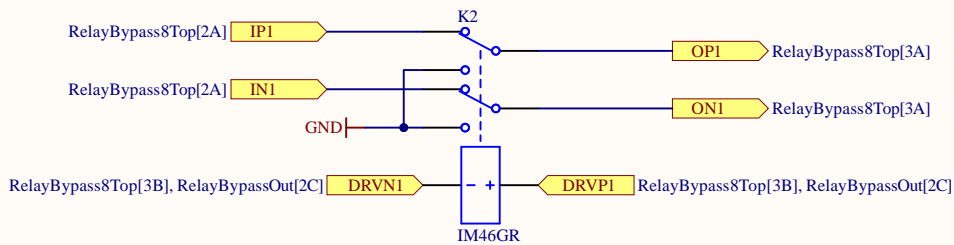
A

A



B

B



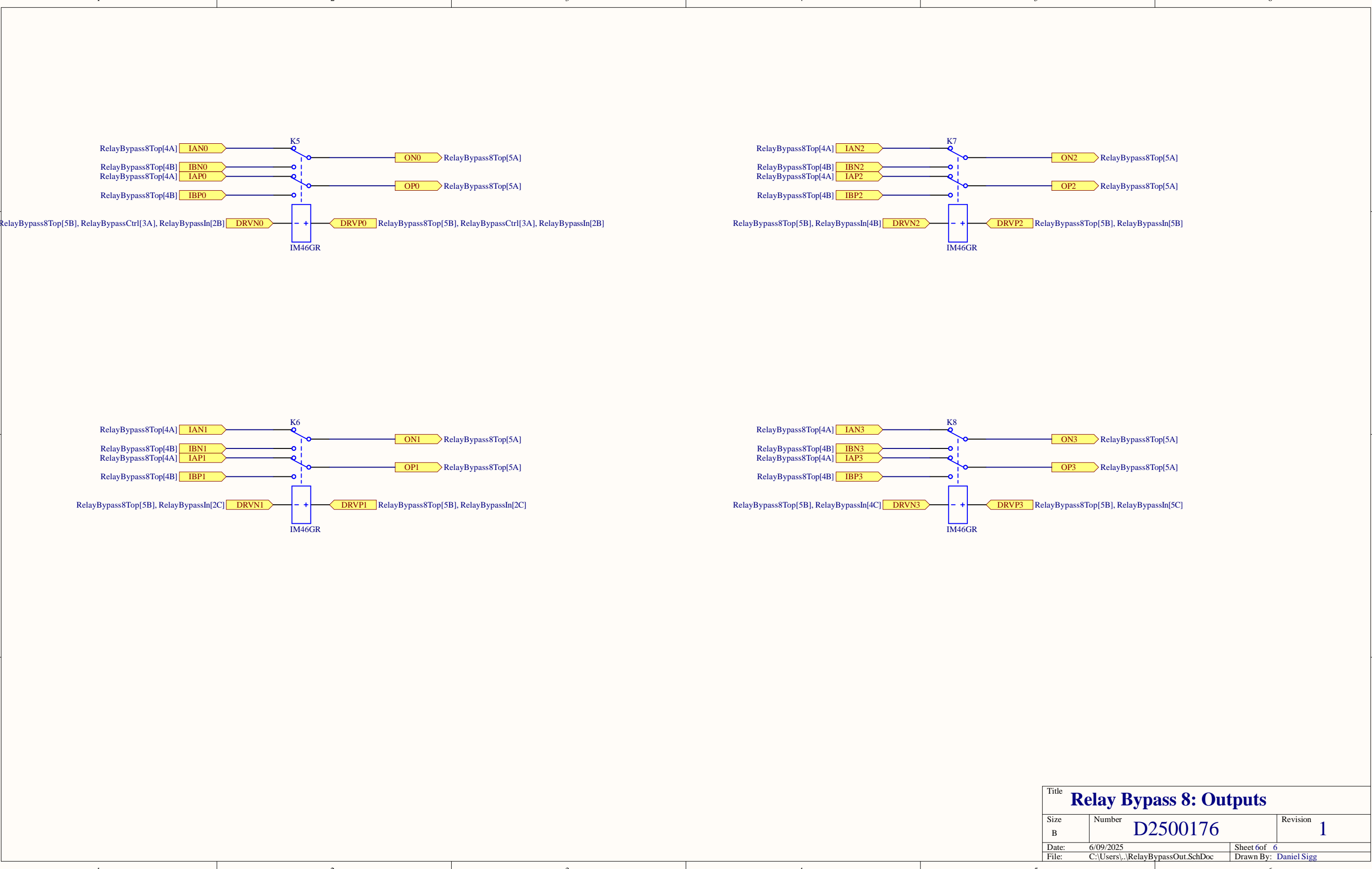
C

C

Title			Relay Bypass 8: Inputs		
Size	Number	Revision			
B	D2500176	1			
Date:	6/09/2025	Sheet 5 of 6			
File:	C:\Users\...\RelayBypassIn.SchDoc	Drawn By: Daniel Sigg			

D

D



RelayBypass8Top[4A]

IAN1

RelayBypass8Top[4B]

IBN1

RelayBypass8Top[4A]

IAP1

RelayBypass8Top[4B]

IBP1

K6

ON1

RelayBypass8Top[5A]

OP1

RelayBypass8Top[5A]

RelayBypass8Top[5B], RelayBypassIn[2C]

DRVN1

+

-

DRVVP1

RelayBypass8Top[5B], RelayBypassIn[2C]

IM46GR

RelayBypass8Top[4A]

IAN3

RelayBypass8Top[4B]

IBN3

RelayBypass8Top[4A]

IAP3

RelayBypass8Top[4B]

IBP3

K8

ON3

RelayBypass8Top[5A]

OP3

RelayBypass8Top[5A]

RelayBypass8Top[5B], RelayBypassIn[4C]

DRVN3

+

-

DRVVP3

RelayBypass8Top[5B], RelayBypassIn[5C]

IM46GR

Title

Relay Bypass 8: Outputs

Size

B

Number

D2500176

Revision

1

Date:

6/09/2025

Sheet 6 of 6

File:

C:\Users\...\RelayBypassOut.SchDoc

Drawn By: Daniel Sigg

